



फैक्स / Fax : 91-0522-2452494
टेलीफोन / Tele: 0522- 2462638



भारत सरकार –रेल मंत्रालय
अनुसंधान अभिकल्प और मानक संगठन
लखनऊ – 226011

Government of India - Ministry of Railways
Research Designs & Standards Organisation
Lucknow – 226011

No. MW/APB/BMB

May 4, 2022

General Manager (Mech.)

1. Northern Railway, Baroda House, New Delhi-110 001
2. Central Railway, CST, Mumbai-400 001
3. Eastern Railway, Fairlie Place, Kolkata-700 001
4. Western Railway, Churchgate, Mumbai-400 020
5. Southern Railway, Park Town, Chennai-600 003
6. South Central Railway, Secunderabad-500 071
7. South Eastern Railway, Garden Reach, Kolkata-700 043
8. North Eastern Railway, Gorakhpur-273 001
9. Northeast Frontier Railway, Maligaon, Guwahati-781 011
10. East Central Railway, Hajipur, Bihar 844 101
11. North Western Railway, Jaipur-302 006
12. North Central Railway, Allahabad.-211 001
13. South Western Railway, Hubli – 580 023
14. East Coast Railway, Bhubaneswar, Orissa-751 023
15. West Central Railway, Jabalpur-482 001
16. South East Central Railway, R.E. Complex, Bilaspur – 495 004

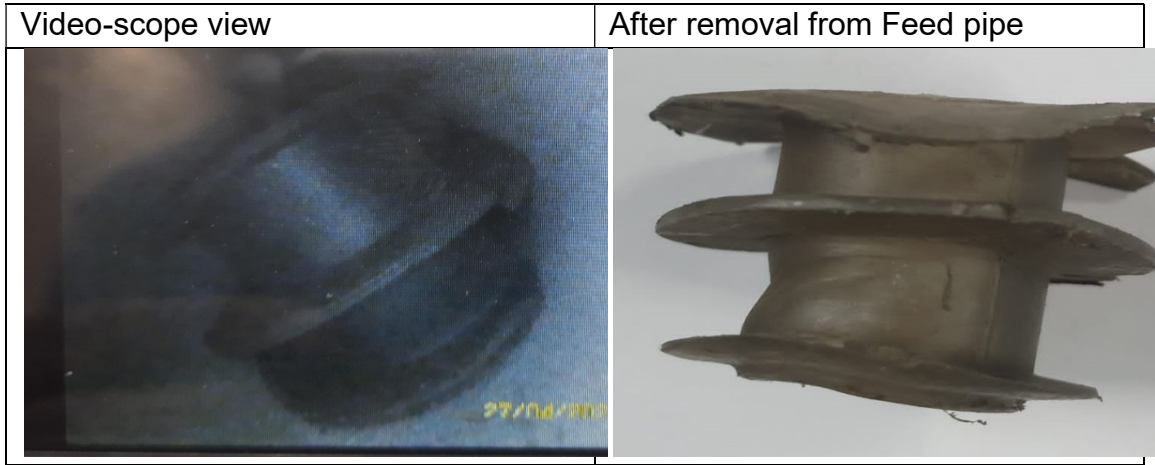
Sub: Poor Brake Power in newly manufactured BOXNHL (MBS) rake.

Jabalpur Division/WCR reported a case of SPAD/runaway case on 21.04.2022 of a newly manufactured **BOXNHL rake provided with BMBS**. This rake was under monitoring as there were cases of poor brake power on earlier occasions also.

Upon **examination by RDSO through video scope**, it was revealed that there was an **obstruction in the BP pipe as well as FP pipe**. The obstruction was due to **leftover protection plugs which are fitted at the end of air brake pipes** during manufacture.



Blockage in BP pipe



Blockage in FP Pipe



Pipe with plug at manufacturer's premises

In view of the above, it is advised that Zonal Railways should consider the possibility of blockages in runaway cases/significantly higher braking distance for both conventional as well as BMBS rakes.

During major maintenance schedule i.e. ROH & POH, the wagons to be checked for blockages in FP and BP through either of the following:

- Removal of dirt collector and conducting blow through from both ends.
- Video scopy wherein a camera is inserted into the pipes and visual seen on the hand-held monitor.

(शैलेन्द्रकुमारशर्मा)
निदेशक/वैगन
कृतेमहानिदेशक /वैगन

Copy to- EDME/Freight/RB- for kind information