



भारत सरकार – रेल मंत्रालय  
अनुसंधान अभिकल्प और मानक संगठन  
लखनऊ – 226011  
EPBX (0522) 2451200  
Fax (0522) 2452494

Government of India - Ministry of  
Railways  
Research Designs & Standards Organisation  
Lucknow – 226011



MW/APB/BMB

Date:06.09.2022

CRSE/ Freight  
All Zonal Railways

**Sub:** Drive for checking correct provisioning of Anti Pilferage Device (APD) for connecting pins in wagons having Bogie Mounted Brake System (BMBS) of M/s Knorr Bremse India Pvt Ltd (M.s KBIPL)

**Ref:** Maintenance Manual of M/s Knorr Bremse India Pvt. Ltd.

1. **M/s Knorr Bremse India Pvt. Ltd.** in maintenance manual of BMBS has given details of drawings of APD to be fitted on connecting pins of brake cylinder, primary brake beam, secondary brake beam, cable equalizer and push rod. Relevant pages of maintenance manual of M/s KBIPL are enclosed herewith
2. However, it has been noticed that in some wagons APD has not been fitted as per the drawing given in the maintenance manual. Out of these, **fitment of APD as per the given drawing is most crucial in push rod.**
3. Hence, Zonal Railways are advised to conduct a **special drive for 45 days** wherein all **wagons having BMBS** shall **be checked for fitment of APD in push rod** as per the given drawing. If any wagon is having **incorrect fitment** of APD, same should be **rectified** and **wagon should be turned out only after ensuring correct fitment of APD.**
4. Special focus for checking of correct fitment of APD on push rod and rectifying the same, as applicable, must be given on **wagons manufactured in and after year 2019, including privately owned wagons.**
5. Result of the drive should be entered in the google sheet available on the following link:

<https://docs.google.com/spreadsheets/d/1Eo1Y5MkFvTSeMQWyYElmr6HDLEHX39Ywnjd-luoqBjQ/edit?usp=sharing>

The matter may be treated as most urgent.

**Encl:** Relevant pages of M/s KBIPL Maintenance Manual for BMBS

**SHAIENDRA KUMAR  
SHARMA**

Shailendra Kumar Sharma  
Director/Wagon  
For Director/General Wagon

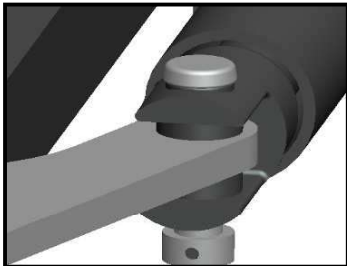
**Copy to** –EDME/Freight/RB- For kind information

**APDs to be provided on Bogie Mounted Brake System**

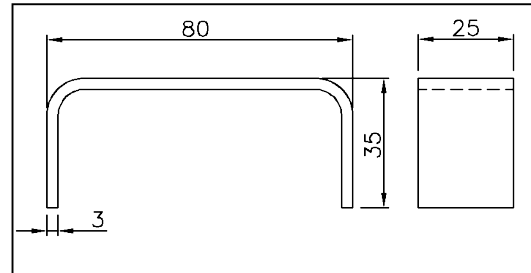
**On Brake cylinder Pins**

The pin connecting the brake cylinder with lever is to be fitted with Bush & Dowel Sleeve.

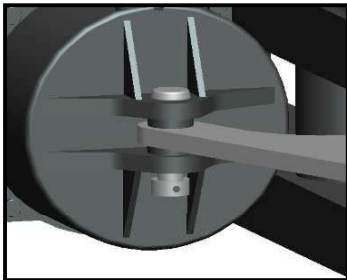
**Brake Cylinder Front End**



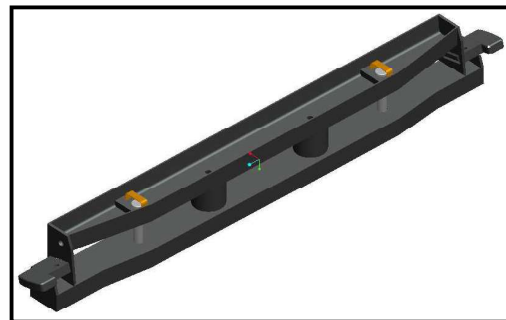
**APD for Primary & Secondary Beams**



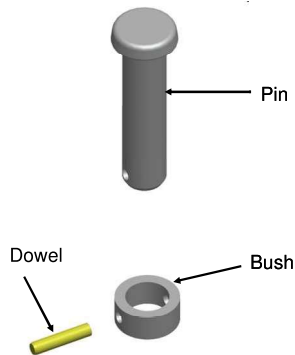
**Brake Cylinder Rear End**



**APD on Primary Beams**



**Exploded view of Assembly**



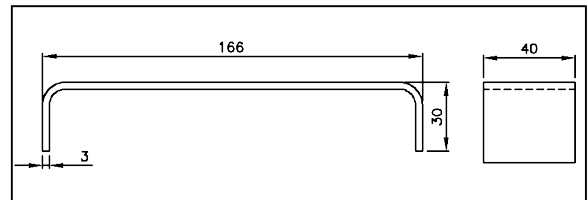
**APD on Primary Beams**



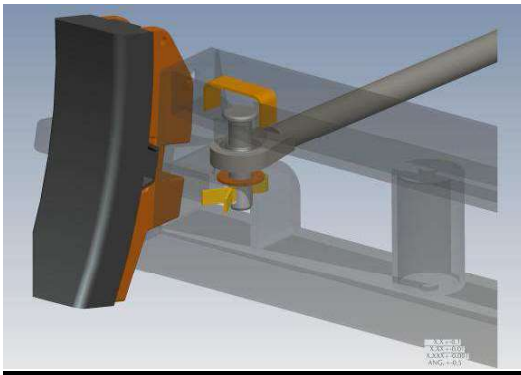
**APD on Secondary Beams**



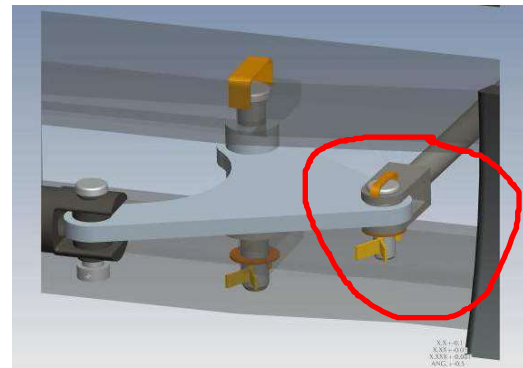
**APD for Cable equalizer**



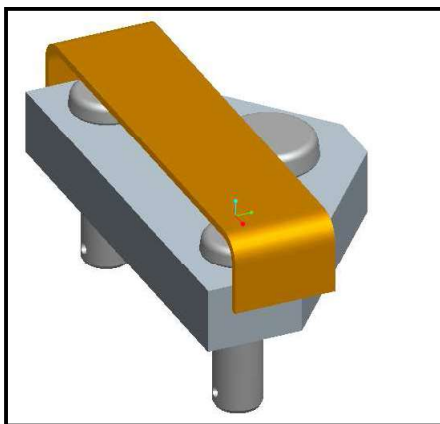
**APD on Secondary Beams**



**APD for Push Rod**



**APD on Cable Equalizer**



**APD on Push Rod**

