

Brake Binding in LHB coaches

There may be three condition

Cond.I-Both trolleys are affected.

Cond.II-Only one trolley is affected.

Cond.III-Only one wheel of trolley is affected.



Brake indicator Red

Cond.I-

If Both trolleys are affected.

**Pull quick release valve of DV
if Brakes released**

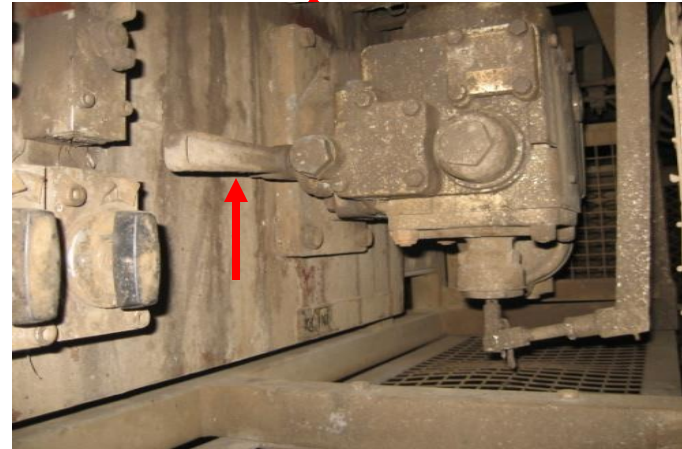
Isolate DV & AR

Pull quick release valve of DV again

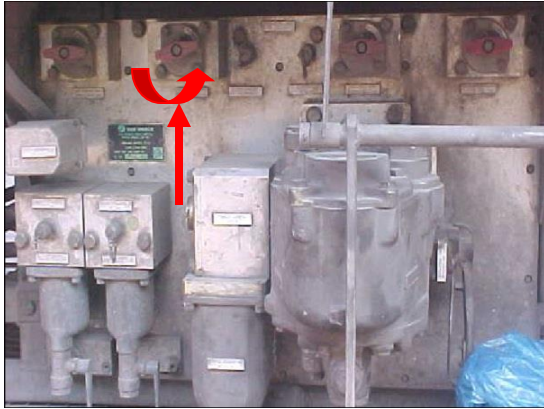
Ensure the release of Brake pads.



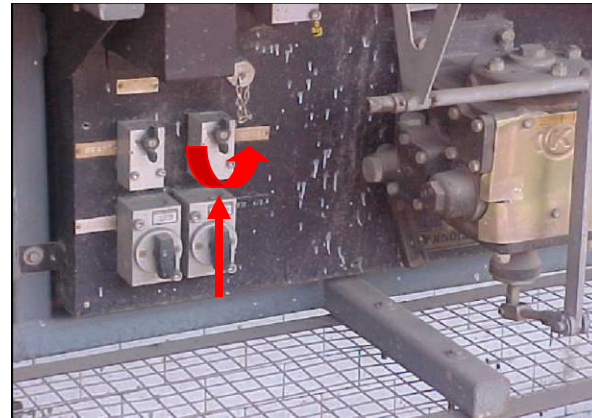
DV Quick Release Rod



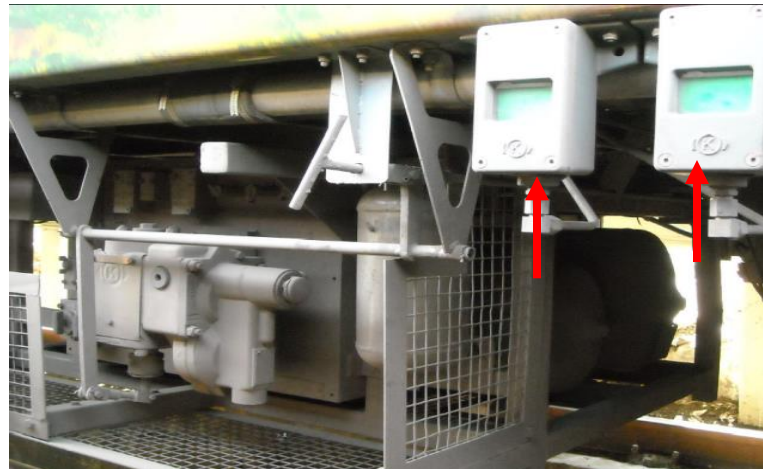
DV Isolating Handle in isolating position



FP connection Isolating Cock (FTIL) (To move anti-clockwise by 90°)



FP connection Isolating Cock (KBI) (To move anti-clockwise by 90°)



Brake indicator Green

if Brakes are not released

Close both trolleys BC Isolating cock.

if Brakes released

Isolate DV & AR

Pull quick release valve of DV again

Ensure the release of Brake pads

Brakes do not release or release only on one bogie

Open flexible pipe of BC line.

Brake will release

Isolate DV & AR

Pull quick release valve of DV again

Ensure the release of Brake pads

Cond.II

If Only one trolley is affected.

Isolate the affected trolley

If brake released

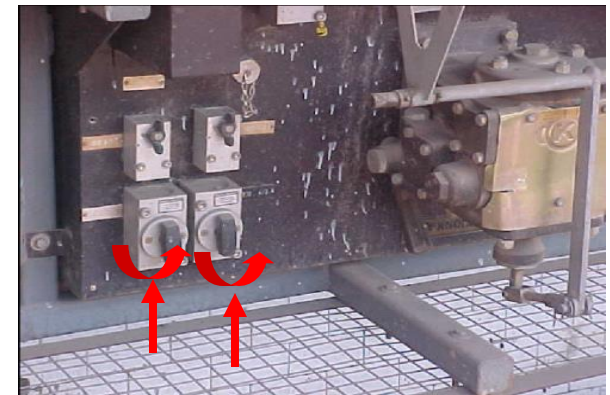
Isolate DV & AR

Pull quick release valve of DV again

Ensure the release of Brake pads



***BC Isolating Cock (FTIL)
(To move anti-clockwise by 90°)***

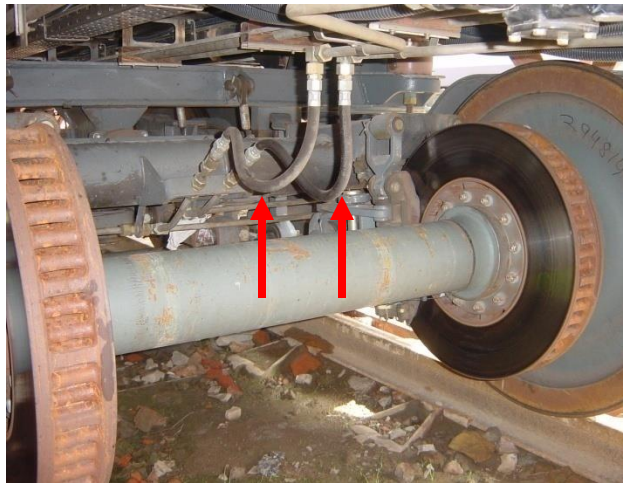


***BC Isolating Cock (KBI)
(To move anti-clockwise by 90°)***

if Brakes not release
Open flexible pipe of BC line.
Brake will release.

Isolate DV & AR

Pull quick release valve of DV again
Ensure the release of Brake pads



BC line Flexible hose

Cond.III-Only one wheel of trolley is affected.

**If BC of affected wheel in operated condition.
Increase the slack between brake pad & brake disc.
Use spanner-24/27-for KB,
or
43 for Faivelley.**



Brake cylinder slack adjuster nut

if Brakes released

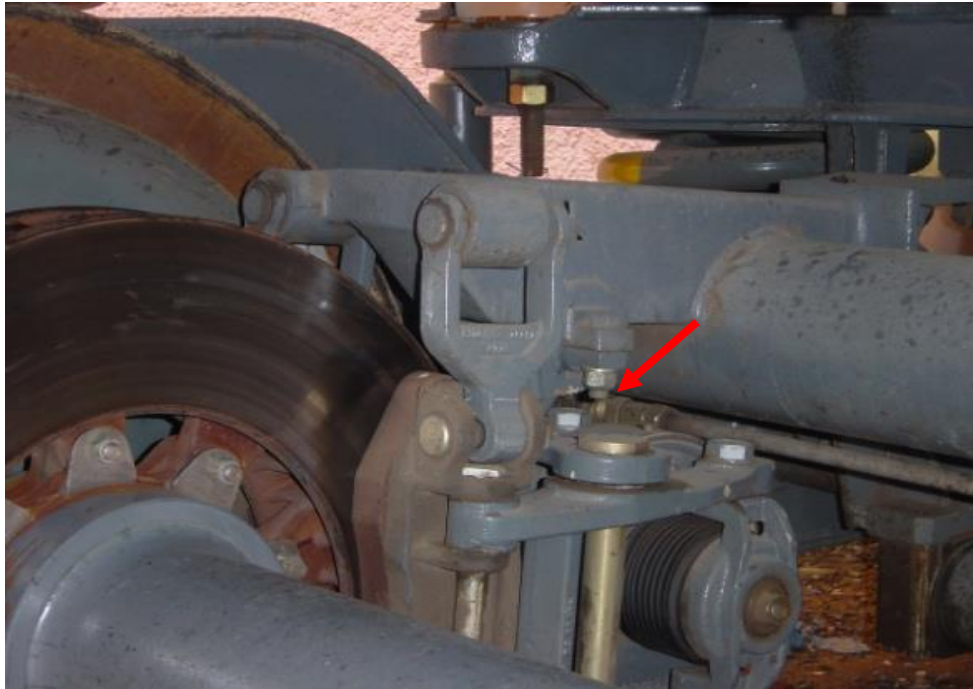
Isolate DV & AR

Pull quick release valve of DV again.

Ensure the release of Brake pads.

If Brakes are not released

**Crush the brake pad of affected caliper unit.
Remove the brake caliper pivot pin of affected
trolley.**



Brake caliper pivot pin

if Brakes released

Isolate DV & AR

Pull quick release valve of DV again

Ensure the release of Brake pads

THANKS