

Machineries, Plants and Equipments used in Workshops

Following are the different types of machineries, plants and equipments used in Railway workshops:

1. Grinder



3. Pipe threading machine



4. Power hacksaw



2. Double spindle drilling machines



5. Multi-track surface traverse



- 6. Track surface traverse
- 7. EOT cranes



8. Wood cutting saw



- 9. Bosch tanks
- 10. Shot blasting machine



11. Electric hoist



12. Shock absorber testing machine



- 13. Grinder cum mixer
- 14. Circular shearing machine



15. Paint mixer



16. Putty mixer



17. Trimming press



20. Jib cranes



18. Pneumatic power hammer



21. Scrag testing machine



19. Shearing and punching machine



22. Furnaces



23. Incinerator



27. Turret lathes



24. Air compressor



28. Hydraulic press



25. Centre lathes



29. Shaper



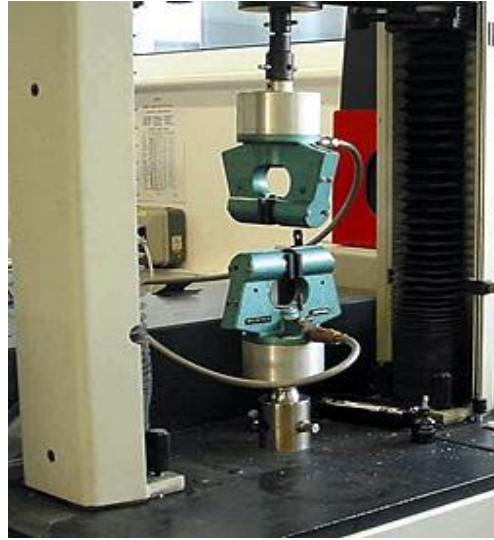
26. Capstan lathes



30. Milling machine



33. Tensile testing machine



31. Slotting machine



34. Electric Arc welding set



32. Magnaflux testing machine



35. Mig/Mag welding sets



36. Ox y-Acetylene Cutting Plant



39. Truck lister



40. Bogie load testing plant



37. Portable Plasma cutter



41. Water tank test rig

42. Roof leak testing plant

43. DV test bench

38. Fork lifter



44. Air brake single coach test rig



47. Roller bearing cleaning Plant



45. Brake cylinder testing rig



48. Hydraulic Bearing extractor



46. Induction Heater



49. Portable grinder



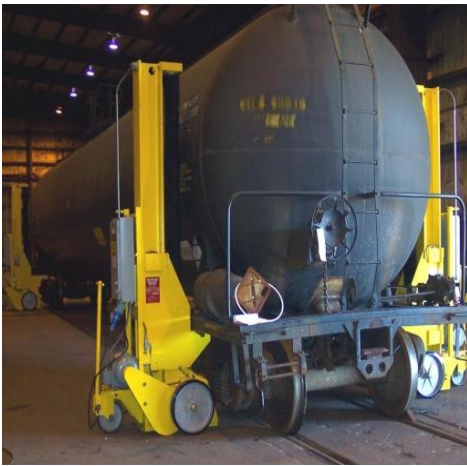
50. Road cranes



53. Wheel Diameter gauge



51. Hydraulic or electrical jack



54. Zygo Plants



52. Wheel Distance gauge



55. Ultrasonic Testing Machine



56. CNC Surface wheel lathe



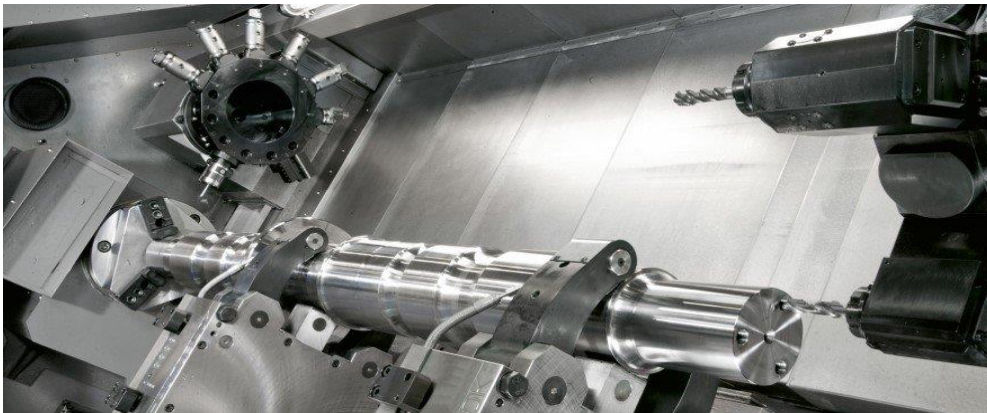
57. Axle journal burnishing machine



58. CNC Hydraulic Wheel Press



59. Axle turning lathe



-----XXX-----