

# Organization and objectives of Mechanical Department

STC/NBQ/NFR

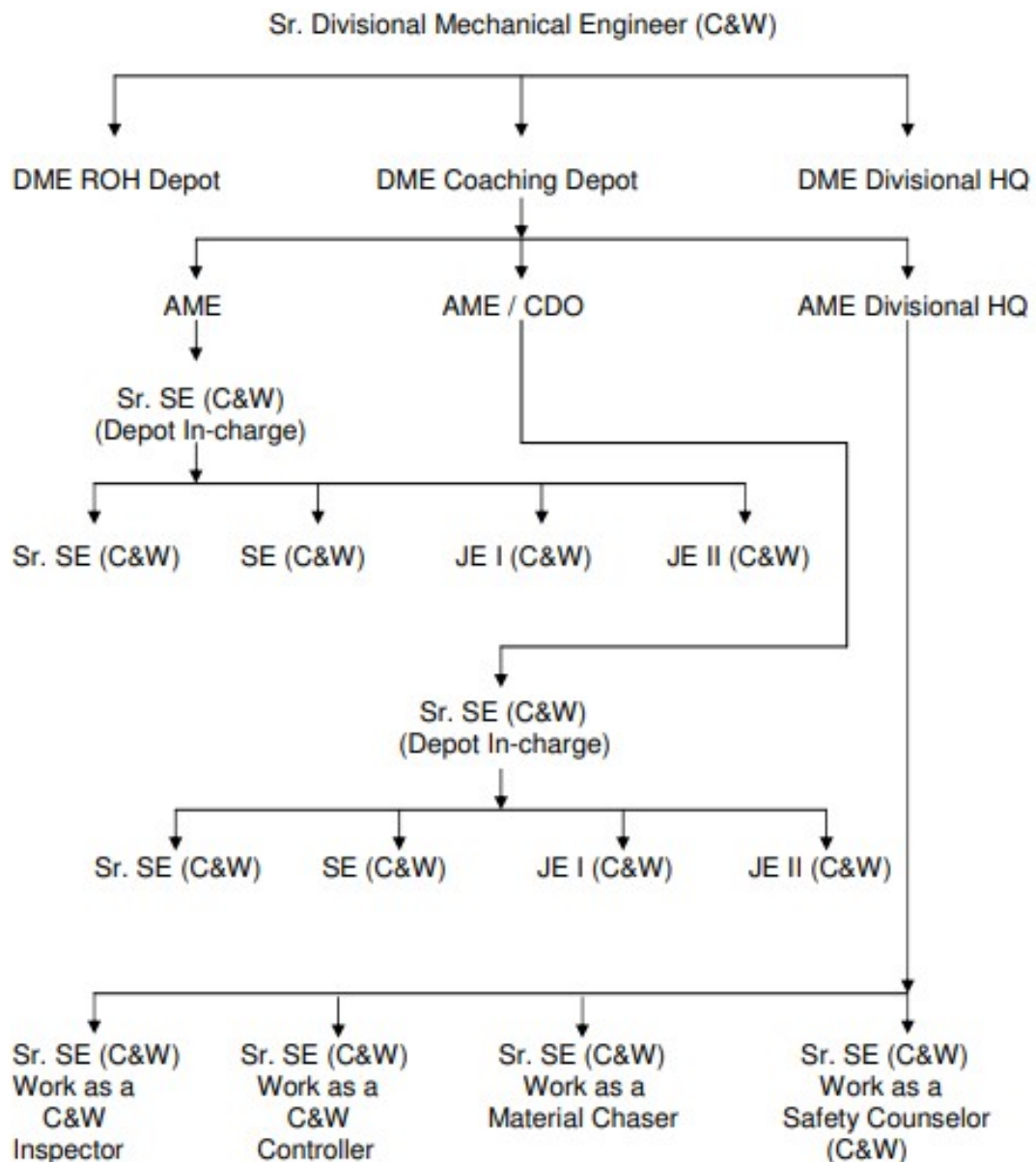
The Mechanical Department is headed by Member (Mechanical) at Railway Board. In each of the zones the Department is headed by a Principal Chief Mechanical Engineer who reports to the General Manager of the Railway. The office of the Member (Mechanical) of the Railway Board guides the PCME on technical matters and policy.

At the divisional level including Diesel Shed, Sr. Divisional Mechanical Engineers are responsible for implementation of the policies framed by Railway Board and Zonal Railways.

The Workshops are headed by Chief Works Managers and report to the PCME.

Production Units are managed independently by General Managers reporting to the Railway Board.

Organizational setup of mechanical officer's and supervisor's of C&W wing in a division.



## Orgnaization Set up of Officers and Supervisors at Diesel Shed

**(Sr.DME/DME/ ADME)**

**SSE**

**JE**

**Sr Technician**

**Technician Gr I**

**Technician Gr II**

**Technician Gr III**

**Helper I**

**Helper II**

## Orgnaization Set up of Officers and Supervisors at Work Shop:

**Workshop In-charge**

**(CWM)**

**Dy. CME**

**WM**

**APO**

**AWM**

**APE**

**SSE**

**JE**

**Sr Technician**

**Technician Gr I**

**Technician Gr II**

**Technician Gr III**

**Helper I**

**Helper II**

## Functions of Mechanical Department:-

1. Production of rolling stocks in production units (PU's)
2. Heavy repairs to rolling stocks in workshops
3. Regular maintenance in divisional and zonal setup
4. Participate in safety and disaster management in division and zones.
5. Running of rolling stock depots and sheds, coaching depots, ROH depots, Diesel sheds etc.
6. Running of trains by skilled train driver and assistants
7. Liaison with other departments for smooth operations
8. Management of fuel supply, storage, distribution and accountal
9. Training at various levels in BTC's, STC's and IRIMEE

\*\*\*\*\*