

INDIAN RAILWAY

The first train in the World ran between Stockton and Darlington in England in 1825. In India first train ran on 16th April' 1853 from Boribunder to Thane followed by the second from Howrah to Hoogly on 15th August' 1854.

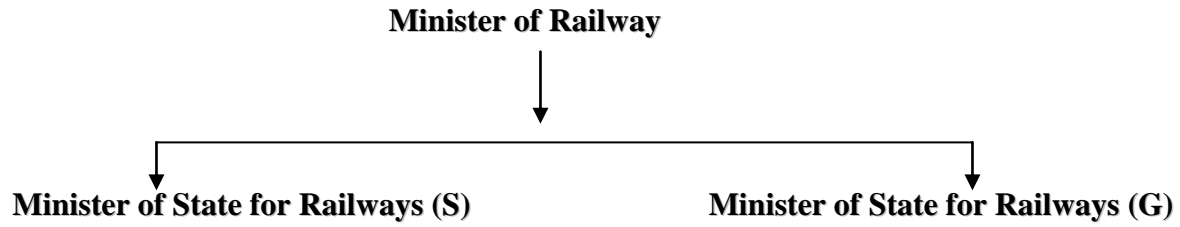
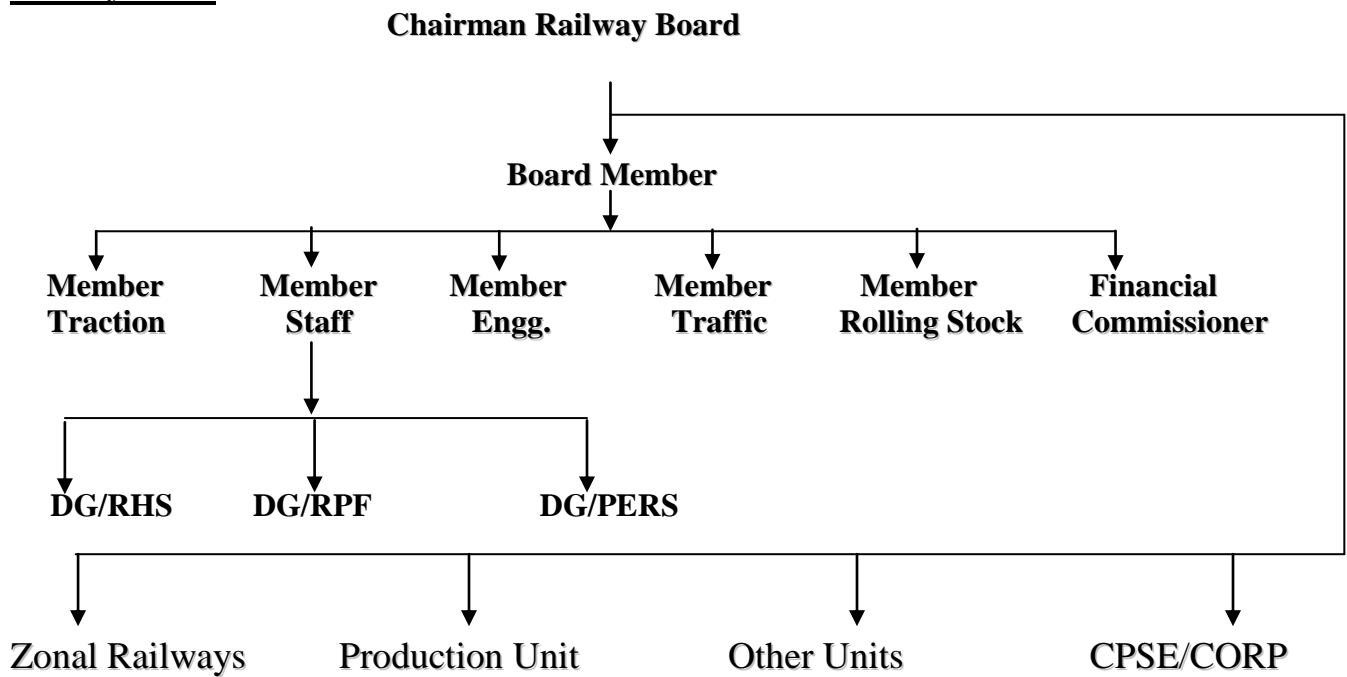
Statistics

➤ The biggest organization in India.

- **No. of employees** : 12,70,339 (as on 31.03.2019)
- **Total Route** : 67,415 K.M. (BG: 62,891, MG: 2,839, NG: 1,685)
- **Electrified Route** : 34,319 K.M.
- **Non Electrified Route** : **33,096** K.M.
- **Railway Stations** : 7,321
- **Locomotives** : **12,147** (Steam: 39, Diesel: 6,049, Electric: 6,059)
- **Total Coach on line** : (PCV- 57134, OCV-6,406, EMU & MEMU-10439, Rail car -24)
- **Total Wagon on line** : **2,89,185**
- **Originating Passenger Traffic** : **8439** Million
- **Originating Goods Traffic** : **1221** Million
- **Total Investment** : Rs. 5,73,641.66 Crore
- **Annual Expenditure on Staff** : Rs. 1,34,364.18 Cr
- **Average Annual Wage /** : Rs. 10,97,370/-

Employee / Year

- **Railway Hospitals** : 125
- **Health Units** : 586
- **Indoor Beds** : 12, 935
- **No. Of Doctor** : 2,506
- **Experienced Doctors** : 2506
- **No of Canteen** : 253
- **No of POH Workshop** : 46
- **No. of Loco Shed** : **42**
- **C&W Sick line & Depot** : 214
- **No of Railway School** : 112

ORGANIZATION STRUCTURE**Ministry Level****Railway Board**

ZONAL RAILWAYS

SN	RAILWAY	HEAD QUARTER	ROUTE Kms.	No. OF DIVISIONS	ESABLISHED ON
1	Central	Mumbai CST	3905	05	05.11.51
2	East Central	HajiPur	3628	05	01.10.02
3	East Coast	Bhubneswar	2204	03	01.04.03
4	Eastern	Kolkata	2414	04	14.04.52
5	North Central	Allahabad	3151	03	01.04.03
6	North Eastern	Gorakhpur	3667	03	14.04.52
7	North Western	Jaipur	5459	04	01.10.02
8	Northeast Frontier	Maligaon	3948	05	15.01.58
9	Northern	New Delhi	6968	05	14.04.52
10	South Central	Secunderabad	3127	03	02.10.66
11	South East Central	Bilaspur	2447	03	01.04.03
12	South Eastern	Kolkata	2631	04	01.08.55
13	South Western	Hubli	3177	03	01.04.03
14	Southern	Chennai	5079	06	14.04.51
15	West Central	Jabalpur	2965	03	01.04.03
16	Western	Mumbai	6182	06	05.11.51
17	Metro Railway	Kolkata	25	01	29.12.2010
18	South coast	Visakhapatnam	3496	03	27.02.2019

DIVISIONS OF ZONAL RAILWAY

SN	RAILWAY	H. Q.	DIVISIONS
1	Central	Mumbai CST	Mumbai, Bhusaval, Nagpur, Solapur, Pune
2	East Central	HajiPur	Sonpur, Samastipur, Danapur, Pt Deen Dayal Upadhaya, Dhanbad
3	East Coast	Bhubneswar	Khurda Raod, Rayagada, Sambalpur
4	Eastern	Kolkata	Howarah, Sealdah, Asansol, Malda
5	North Central	Allahabad	Alahabad, Jhansi, Agra
6	North Eastern	Gorakhpur	Izatnagar, Luchnow, Varanasi
7	North Western	Jaipur	Jodhpur, Bikaner, Jaipur Ajmer
8	Northeast Frontier	Maligaon	Katihar, Alipurduar, Rangiya, Lumding, Tinsukia
9	Northern	New Delhi	Delhi, Moradabad, Firozpur, Lucknow, Ambala
10	South Central	Secunderabad	Secunderabad, Hyderabad, Nanded

11	South East Central	Bilaspur	Nagpur, Bilaspur, Raipur
12	South Eastern	Kolkata	Kharagpur, Adra, Chakradharpur, Ranchi
13	South Western	Hubli	Bangalore, Mysore, Hubli
14	Southern	Chennai	Chennai, Palakkad, Salem, Madurai, Trichilapalli, Tiruvananthapuram
15	West Central	Jabalpur	Jabalpur, Bhopal, Kota
16	Western	Mumbai	Mumbai Central, Ratlam, Rajkot, Bhavnagar, Vadodara, Ahmedabad
17	Metro Railway, Kolkata	Kolkata	Kolkata
18	South coast	Visakhapatnam	Vijayawada, Guntur, Guntakal

PRODUCTION UNITS

- Chitaranjan Locomotives Works (CLW) - Chitaranjan
- Diesel locomotives Works (DLW) - Varanasi
- Integral Coach Factory (ICF) - Chennai
- Rail Coach Factory (RCF) - Kapurthala
- Railway Wheel Factory (RWF) - Bangalore
- Diesel Modernization Works (DMW) - Patiala
- Railway Spring Karkhana (RSK) - Sithauli

UNDERTAKINGS UNDER THE MINISTRY

- **Rail India Technical & Economic Services Ltd. : (RITES)**
 - (RITES 1974) To design, establish, provide, operate, maintain and perform engineering, technical and consultancy services for development of projects/systems of all types and description pertaining to Railways and Other Sectors/Industries in India and outside India.
- **Indian Railway Construction Co. Ltd. : (IRCON)**
 - (IRCON 1976) To undertake construction activities in India and abroad on turnkey basis or otherwise in various fields of infrastructure like Railways, Bridges, Roads, Highways, Industrial and Residential Complexes, Airports, etc.
- **Indian Railway Financial Corporation Ltd. : (IRFC)**
 - (IRFC 1986) To raise funds from the market to part finance the Plan Outlay of IR.
- **Indian Container Corporation Ltd. : (ICCL)**
- **Konkan Railway Corporation Ltd. : (KRCL)**
 - (KRCL 1990) To construct and operate railway lines, construct Road Over Bridges and rail line projects.
- **Centre For Railway Information Systems : (CRIS)**
 - CRIS 1986 To provide consultancy and IT services to IR as partners to conceptualize and realize technology initiatives, to build new products or services and to implement prudent business and technology strategies.
- **Indian Railway Catering and Tourism Corporation Ltd.: (IRCTC)**

- (IRCTC 2001) To undertake catering and tourism activities of the Railways. Also facilitates internet ticketing through its website.
- **Dedicated Freight Corridor Co-operation of India Ltd. : (DFCCIL)**
 - (DFCCIL 2006) To plan and construct Dedicated Rail Freight Corridors (DFCs) for movement of freight trains on the corridors.
- **Rail Tel Corporation of India Ltd. : (RTCI or RCIL)**
 - (*RailTel 2000*) To utilize the surplus telecom capacity and right of way available with the IR to build nationwide optical fibre cable based broadband telecom and multimedia network.
- **Rail Vikas Nigam Ltd. : (RVNL)**
 - (RVNL 2003) To create and augment the capacity of rail infrastructure. To mobilize resources mainly through multilateral/bilateral funding agencies and also through domestic market for successful implementation of projects.
- **Pipavav Railway Corporation Ltd. : (PRCL)**
 - (PRCL 2001) To execute the Surendranagar-Rajula-Pipavav Port gauge conversion and new line projects in Gujarat.

CENTRALISED TRAINING CENTRES

- | | |
|---|---------------------|
| ● Railway Staff College (RSC) | - Vadodara |
| ● Indian Railways Institute of Civil Engineering (IRICE) | - Pune |
| ● Indian Railways Institute of Signal Engg & Telecom (IRISET) | - Secunderabad |
| ● Indian Railways Institute of Mechanical & Electrical Engg | - Jamalpur (IRIMEE) |
| ● Indian Railways Institute of Electrical Engg (IRIEE) | - Nasik |
| ● Indian Railway Institute of Transport Management | - Lucknow |
| ● Jagjiban Ram Railway Protection Force Academy | - Lucknow |

OTHER UNITS

- | | |
|---|-------------|
| ● N. F. Railway Construction | - Maligaon |
| ● Central Organization For Rly Electrification (CORE) | - Allahabad |
| ● Research Design & Standard Organization (RDSO) | - Lucknow |
| ● Central Organization For Modernization Of Workshop (COFMOW) | - New Delhi |
| ● Centre For Advance Maintenance Technology (CAMTECH) | - Gwalior |

GAUGES

- Broad Gauge : 1676 mm
- Metre Gauge : 1000 mm
- Narrow Gauge : 762 mm & 610 mm

CLASSES OF ACCOMODATION

- AC First Class
- AC Two Tier
- AC Three Tier
- Executive AC Chair Car
- AC Chair Car
- Sleeper Class
- Second Class Chair Car
- General Second Class

CLASSIFACATION OF SERVICES

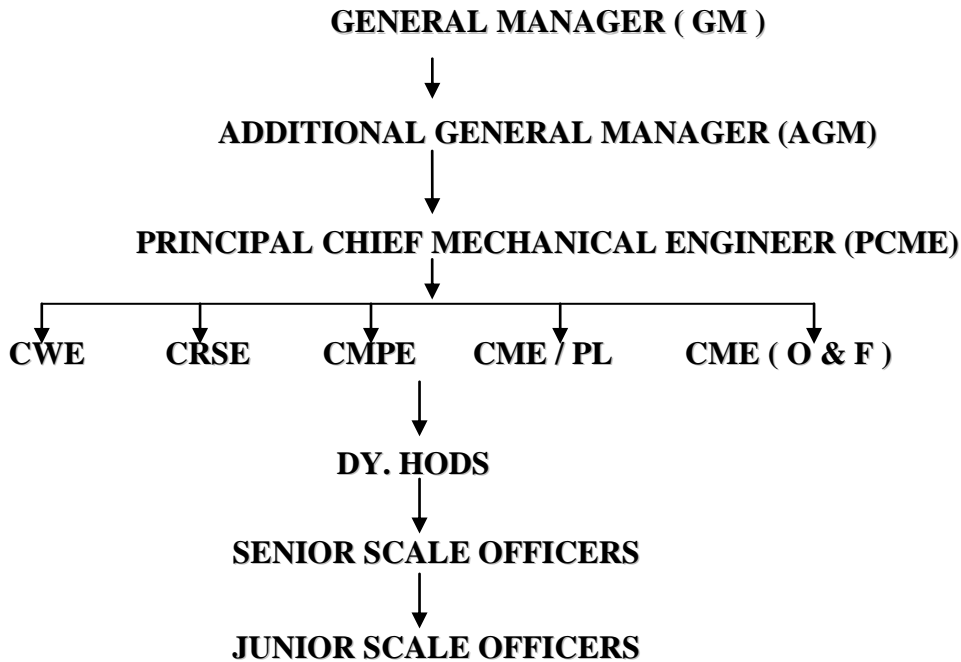
The Railway employees are governed by the Railway services (Revised Pay) Rules 2016. This RSRP Rules shall be deemed to have to come into force on the First Day of January 2016.

Non Gazetted Staff

SN	Category of staff	Starting Pay	LEVEL as per 7 th CPC	Grade Pay as per 6 th CPC
1	Helper	18000/-	Level-1	1800/-
2	Tech-III	19900/-	Level-2	1900/-
3	Trains Clerk/Junior clerk	21700/-	Level-3	2000/-
4	Tech-II	25400/-	Level-4	2400/-
5	Tech-I	29200/-	Level-5	2800/-
6	Sr. Tech/JE	35400/-	Level-6	4200/-
7	SSE	44900/-	Level-7	4600/-
8	MACP(Modified Assured Career progression scheme)	47600/-	Level-8	4800/-
9	MACP	53100/-	Level-9	5400/-

The Pay Scales of Group “A” & “B” Officers are as under

SN	Category of staff	Starting Pay	LEVEL as per 7 th CPC	Grade Pay as per 6 th CPC
1	Junior Scale Officer	56100/-	Level-10	5400/-
2	Senior Scale Officer	67700/-	Level-11	6600/-
3	Junior Administrative Grade Officer	78800/-	Level12	7600/-
4	Selection Grade Officer	118500/-	Level-13	8700/-
5	RPF	131100/-	Level-13A	8900/-
6	Selection Grade Officer	144200/-	Level-14	10000/-
7	Higher Administrative Grade	182200/-	Level-15	12000/-
8	Grade in Board	205400/-	Level-16	75500-80000/-
9	GM/ Addl. Members	225000/-	Level-17	80000/-

ZONAL LEVEL ORGANIZATION**ZONAL RAILWAY ORGANIZATION**

SN	DEPARTMENTS	PHOD
1.	Operating	Principal Chief Operating Manager (PCOM)
2.	Engineering	Principal Chief Engineer (PCE)
3.	Mechanical	Principal Chief Mechanical Engineer (PCME)
4.	Electrical	Principal Chief Electrical Engineer (PCEE)
5.	Signal & Telecom	Principal Chief Signal & Telecom Engineer (PCSTE)
6.	Accounts	Principal Financial Adviser (PFA)
7.	Commercial	Principal Chief Commercial Manager (PCCM)
8.	Personnel	Principal Chief Personnel Officer (PCPO)
9.	Stores	Principal Controller Of Stores (PCOS)
10.	Medical	Principal Chief Medical Director (PCMD)
11.	Security	Principal Chief Security Commissioner (PCSC)

HISTORY OF N. F. RLY.

Railway first entered Assam in 1881 when the Assam Railway and Trading Company began construction of a 65-Km long metre gauge line from Dibrugarh to Makum Collieries in Margherita for the sole purpose of transporting tea and coal. The year 1881 was a landmark year for railways in this region for yet another event and that was the famous Darjeeling Himalayan Railway with the legendary Toy Train was commissioned.

With the partition of India, the Bengal and Assam Railway had to be re-divided according to the political boundary. As a result of which the Assam Railway was formed and from August 1947, with headquarters at Pandu. To establish an all India rail route, the construction of the Assam Rail Link between Kishanganj and Fakiragram, 142 miles long project was started on a war footing on 26th January, 1948 and completed and opened in December 1949 within a record time. The first passenger train runs on January 26, 1950.

REPAIRING WORKSHOPS IN N. F. RLY

WORKSHOP	CODE	ACTIVITY
C & W WORKSHOP NEW BONGAIGAON	NBQS	Repairing of BG Coaching & Wagon Stock
MECHANICAL WORKSHOP DIBRUGARH	DBWS	Repairing of BG Coaching Stock
TINDHARIA WORKSHOP	TDH	Repairing of NG Coaching and Locomotives

DIESEL SHEDS IN N. F. RLY

- LUMDING DIESEL SHED (MG LOCO)
- NEW GUWAHATI DIESEL SHED (BG LOCO)
- SILIGURI DIESEL SHED (BG, MG & NG LOCO)
- MALDA DIESEL SHED (BG LOCO)

Role of C&W depot

1. To maintain punctuality of trains
2. To ensure safe running of trains
3. To minimize sick marking / detachment and control of ineffective
4. Image building of Railway by providing passenger facilities i.e. Carriage watering, linen in AC coaches, cleanliness of coaches through CTS / OBHS and mechanized cleaning, Pest and Rodent control of coaches,
5. For attending en-route passenger complaint.
6. To avoid running of due / overdue IOH / POH / ROH coaches / wagons in train service.
7. To manage relief and rescue operation and restoration at the site of accident.
8. To ensure implementation of instruction regarding maintenance of coaches / wagons time to time issued by Railway Board / RDSO / Zonal HQ.

Objective of C&W depots:- Indian Railway is divided into 17 zones and each zone is divided into different division and each division is again divided into different depots At zonal level mech. Dept. is headed by CME and division level headed by Sr. DME (C&W) At division level following activities are being handled by C&W open line department.

- i) To ensure maintenance and repair of carriage and wagon stock and to keep it in operational condition by providing following attention a) Examination of originating trains at maintenance depot and examination yards b) Examination of terminating trains at examination yards. c) Examination of through passing trains at examination yards/ station. d) ROH / IOH of wagon/ coach at maintenance depot.

- ii) To ensure customer satisfaction by providing:- (a) Clean Train station services (CTS) (b) on board house services (OBHS). (c) Auto mechanized cleaning of coaches (d) Carriage watering of coaches. (e) Amenities and safety fittings in passenger coaches. (f) to ensure supply of superior and cleaned quality linen to the AC coaches passenger.
- iii) To ensure implementation of instruction and modification regarding rolling stock, time to time issued by Rly Bd. and RDSO.
- iv) To minimize ineffective of rolling stock by conducting :-
 - (a) Periodical examination/maintenance at examination yard and maintenance siding.
 - (b) By conducting rolling in and rolling out examination at intermediate C&W examination point.
 - (c) To avoid non standard fitting/material.
 - (d) To attend POH of rolling stock at nominated workshop.
 - (e) Avoid to run due and overdue POH stock on train service.