

OVERVIEW OF C&W ORGANIZATION

Presented by-

Rajendra Kushwaha

Instructor/C&W

MSTC/GKP

OVERVIEW OF C&W ORGANIZATION

- Railway Organization for its effective control in working of trains, has an organizational setup at different levels.
- It can be classified into various levels as-
 - Railway Board Level
 - Zonal Level
 - Divisional Level
 - Depot level

Sl No	Name of the Railway	Head Quarters
1	Central Railway	Mumbai(CSTM)
2.	Eastern Railway	Kolkata
3.	Northern Railway	New Delhi
4.	North Eastern Railway	Gorakhpur
5.	North Frontier Railway	Maligon
6.	Southern Railway	Chennai
7.	South Eastern Railway	Kolkata
8.	Western Railway	Charchgate
9.	South Central Railway	Secundrabad
10.	East Central Railway	Hajipur
11.	North Western Railway	Jaipur
12.	East Coast Railway	Bhubaneshwar
13.	North Central Railway	Allahabad
14.	South East Central Railway	Bilaspur
15.	South Western Railway	Hubli
16.	West Central Railway	Jabalpur
17.	Metro Railway	Kolkata
18	South Coast Railway	Visakhapatnam

Sl No	Name of the Railway	Head Quarters	Divisions
1	Central Railway	Mumbai(CSTM)	1.Mumbai-1 2.Solapur-2 3.Nagpur-3 4.Pune-4 5.Bhusawal-5
2.	Eastern Railway	Kolkata	1.Howrah-I-6 2.Howrah-II-7 3.Sealdah-8 4.Malda-9 5.Asansol-10 6.Chaaranjan-11 7.Kolkata Metro-12
3.	Northern Railway	New Delhi	1.Delhi-I-13 2.Delhi-II-14 3.Ambala-15 4.Moradabad-16 5.Lucknow-17 6. Firozpur-18
4.	North Eastern Railway	Gorakhpur	1.Lucknow-19 2.Izzatnagar-20 3.Varanasi-21

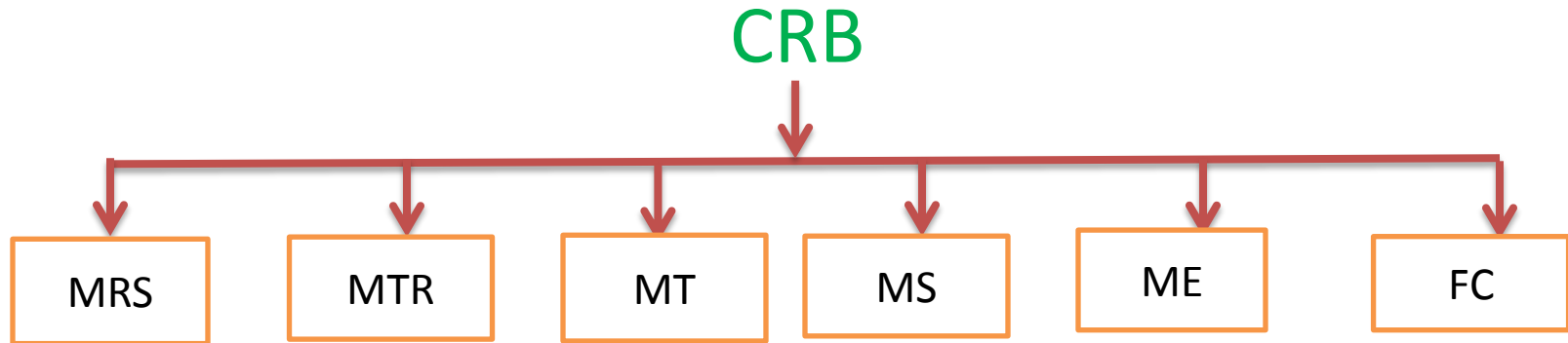
Sl No	Name of the Railway	Head Quarters	Divisions
5.	North Frontier Railway	Maligon	1. Katihar-22 2. Alipurduar-23 3. Rangia-24 4. Lumding-25 5. Tinsukhia-26
6.	Southern Railway	Chennai	1. Chennai-27 2. Madurai-28 3. Palghat-29 4. Trichy-30 5. Trivendrum-31
7.	South Eastern Railway	Kolkata	1. Kharagpur-32 2. Adra-33 3. Ranchi-34 4. Chakradharpur-35 5. Shalimar-36
8.	Western Railway	Charchgate	1. BCT-37 2. Vadodara-38 3. Ahmadabad-39 4. Ratlam-40 5. Bhavnagar-41

Sl No	Name of the Railway	Head Quarters	Divisions
9.	South Central Railway	Secundrabad	1.Secundrabad-42 2.Hyderabad-43 3.Nanded-44
10.	East Central Railway	Hajipur	1.Sonpur-45 2.Samastipur-46 3.Danapur-47 4.Mugalasrai-48 5.Dhanbad-49
11.	North Western Railway	Jaipur	1.Jodhpur-50 2. Bikaner-51 3.Jaipur-52 4.Ajmer-53
12.	East Coast Railway	Bhubaneswar	1.Khurda road-54 2.Waltair-55 3.Sambhalpur-56
13.	North Central Railway	Allahabad	1.Allahabad-57 2.Jhansi-58 3.Agra-59

Sl No	Name of the Railway	Head Quarters	Divisions
14.	South East Central Railway	Bilaspur	1.Bilaspur-60 2.Nagpur-61 3.Raipur-62
15.	South Western Railway	Hubli	1.Bangalore-63 2.Mysore-64 3.Hubali-65 4.RWF/YNK-66
16.	West Central Railway	Jabalpur	1.Jabalpur-67 2.Bhopal-68 3.Kota-69
17.	Metro Railway	Kolkata	
18	South Coast Railway	Visakhapatnam	1Guntakal-70 2.Guntrur-71 3.Vijaywada-72

Railway Board Level

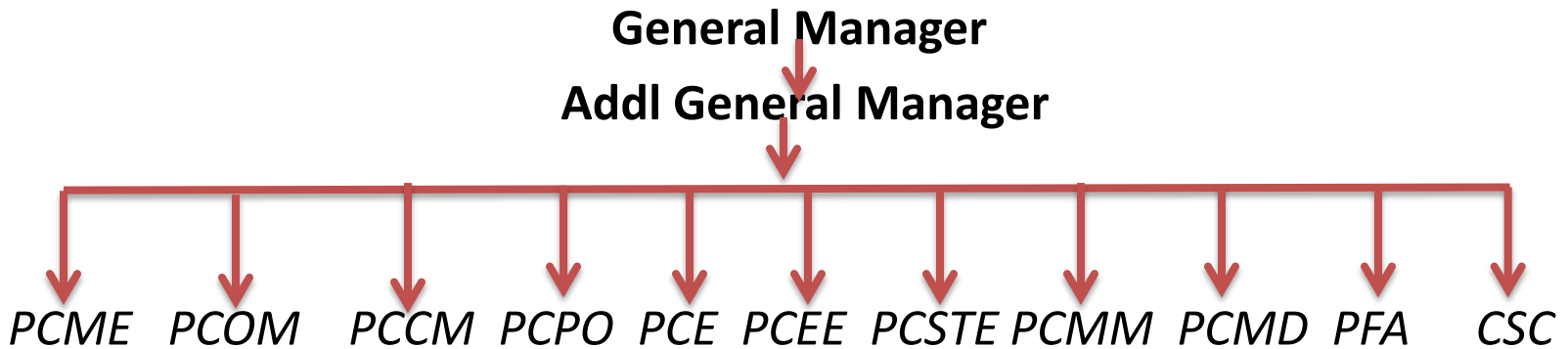
The organizational set up at the Railway Board level is as follows-



The Security and Medical department are under a separate directorate.

Zonal Level

- To have better control over the entire Indian Railways.
- It is divided into zones as follows.
- Further each zone has the Organizational set up as-



- **CRSE** - **Chief Rolling Stock Engineer**
- **CMPE** - **Chief Motive Power Engineer**
- **CWE** - **Chief Workshop Engineer**
- **CME (PLG.)** - **CME Plannaing**

- **The Mechanical Department is divided based on the activities as -**
- **Carriage & Wagon**
- **Locomotive (Running)**
- **Workshops**
- ❖ C & W Organization functions under the control of CME of the Zonal Railway assisted by CRSE for open line –C&W functions
- ❖ CWE for Workshops – Maintenance repair of Carriage & Wagons

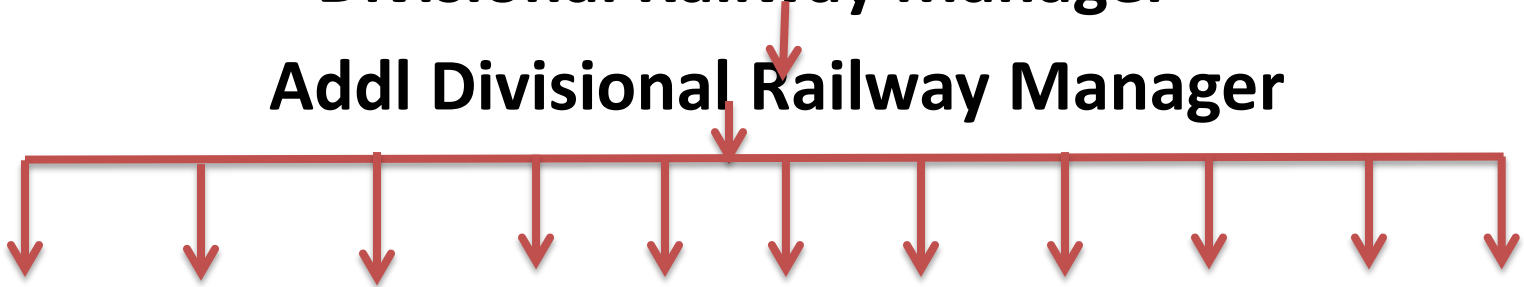
• Functions of C & W Organization:

- ❖ To maintain the coaches and wagons in good fettle.
- ❖ Ensuring availability of coaches and wagons as and when required by the traffic department.
- ❖ Undertaking the different repairs that can Planning for the future requirements in terms of rolling stocks, infrastructure, manpower etc.
- ❖ The zones are further divided into divisions.
- ❖ The total number of divisions in Indian Railways is 72 in number.

Divisional Level

- The organizational set up in the Division is as follows-

Divisional Railway Manager
Addl Divisional Railway Manager



*SrDME SrDOM SrDCM SrDPO SrDE SrDEE SrDSTE SrDMM SrDMD SrDFM
SrDSC*

- SrDME** - Senior Divisional Mechanical Engineer (C&W)
- SrDME** - Senior Divisional Mechanical Engineer (O&F)

DEPOT LEVEL

In any Major C & W Depot, the typical organizational set up is as follows-

Depot In-charge

(Sr.DME/DME/ ADME)

SSE

JE

Sr Technician

Technician Gr I

Technician Gr II

Technician Gr III

Helper I

Helper II

RAILWAY WORKSHOPS:

The organizational set up at the workshop could be-

Workshop In-charge
(CWM)

Dy. CME
WM

APO

AWM
SSE
JE

APE

Sr Technician
Technician Gr I
Technician Gr II
Technician Gr III
Helper I
Helper II

THANK YOU