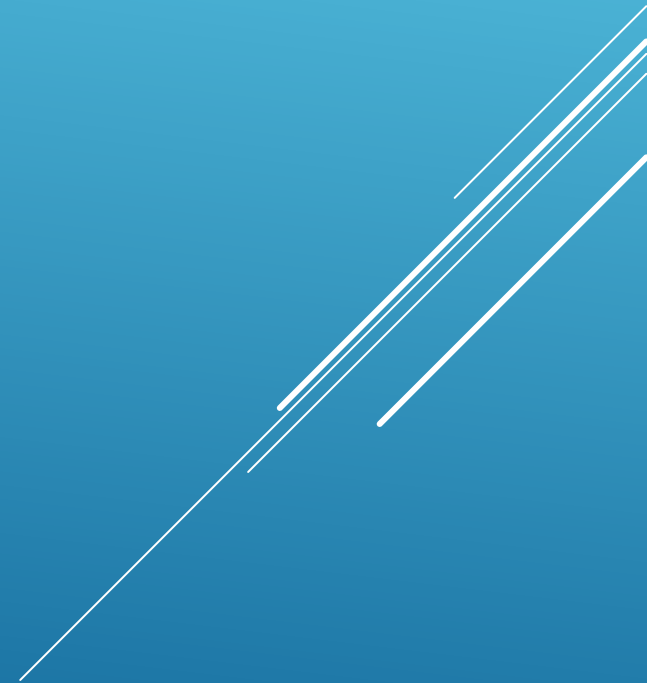


# **PANTRY EQUIPMENT**



# Coach wise Pantry Equipment Details

## ▶ LHB AC 3T/2T COACH: SPEC. NO. EDTS-139

S.no.	Item	Load	QPC	Total Load
1	<b>Hot case</b> 2x500W + 2x25W	1050 W	1	1050 W
2	<b>Refrigerating Unit</b> 2x400W	800W	1	800W
<b>Pantry load</b>				<b>1.85 KW</b>

# LHB AC - CHAIR CAR COACH: SPEC. NO. EDTS-130

S.no	Item	Load	QPC	Total Load
1	<b>Hot case</b> 3x500W + 3X25W	1575 W	1	1575 W
2	<b>Refrigerating Unit</b> 800W	800W	1	800W
3	<b>Water Boiler (30L)</b> 2x1500 W	3000W	1	3000W
4	<b>Soup warmer(11L)</b> continental/sunnex/tefal	500W	1	500W
<b>Pantry load</b>				<b>5.875 KW</b>

# LHB AC – HOT BUFFET COACH: SPEC. NO. EDTS-118

S.no	Item	Load	QPC	Total Load
1	Hot case 3x500W	1500 W	1	1500 W
2	Bottle Cooler 90L	400W	1	400W
3	Deep Freezer	500W	1	500W
4	Water Boiler (30L)	3000W	3	9000W
5	Refrigerator ( 310L) Standard size available in market	475W	1	475W
6	Oven Toaster Grill ( 16L)	1200W	2	2400W
7	Electric cooking range	2000W 1.1KW	5 3	10000W 3300W
<b>Pantry load</b>				<b>27.575K W</b>

# LHB NAC CHAIR CAR COACH: SPEC. NO. EDTS-339



S.no	Item	Load	QPC	Total Load
1	<b>Hot case</b> 2x500W + 2x25W	1050 W	1	1050 W
2	<b>Refrigerating Unit/Bottle cooler</b>	400W	1	400W
3	<b>Bottle cooler/Deep freezer</b>	500W	1	500W
4	<b>Water Boiler (25L)</b>	3000W	1	3000W
<b>Pantry load</b>				<b>4.950KW</b>

# LHB DOUBLE DECKER COACH: SPEC. NO. EDTS-329



S.no	Item	Load	QPC	Total Load
1	<b>Hot case</b> 2x500W + 2x25W	1050 W	1	1050 W
2	<b>Refrigerating Unit/Bottle cooler</b>	400W	1	400W
3	<b>Bottle cooler/Deep freezer</b>	500W	1	500W
4	<b>Water Boiler (25L)</b>	3000W	1	3000W
<b>Pantry load</b>				<b>4.900KW</b>

# SOUP WARMER

LID

MOUNTING  
BRACKET

FOOD  
INSERT

ELECTRIC  
KETTLE

THERMOSTAT



# SOUP WARMER

- **CAPACITY**
  - : a) **FOOD INSERT - 12 LITRES**
  - b) **HEATING MEDIUM - 0.6 LITRES OF WATER**
- **MAXIMUM POWER**
  - : **475W (MAX.)**
- **NOMINAL VOLTAGE**
  - : **230V +/- 10%,50HZ**
- **NOMINAL CURRENT**
  - : **2.2 AMP (MAX.)**
- **WEIGHT**
  - : **4.5 KG**
- **THERMOSTAT RANGE**
  - : **LOWER TEMP. RANGE - 70 - 72 DEG. C**
  - HIGH TEMP. RANGE - 90 - 92 DEG. C**
- **THERMAL INSULATION**
  - : **BONDED MINERAL WOOL**



# WATER BOILER

**CAPACITY :15LITRES**

**POWER :230V AC,+/-10%**

**HEATING ELEMENT : 2KW**

**THERMOSTAT : 0-100 DEG. C**

**DIM. :525X300X285MM**



# REFRIGERATING UNIT



BOTTLE COOLER

DEEP FREEZER

COOLING  
COMPARTMENT

COVER

# REFRIGERATING UNIT

<b>DIMENSIONS</b>	<b>:1157X595X1195MM</b>
<b>POWER</b>	<b>:800W</b>
<b>VOLTAGE</b>	<b>:230V+/-10%,50HZ</b>
<b>THERMOSTAT RANGE</b>	<b>: a) DEEP FREEZER -18 TO -25 DEG. C b) BOTTLE COOLER 0 TO +10 DEG.C c) COOLING COMPT. 0 TO +10 DEG.C</b>
<b>REFRIGERATION CAPACITY</b>	<b>: 560 Kcl/Hr</b>
<b>REFRIGERANT</b>	<b>: R22</b>
<b>COOLING</b>	<b>: FAN</b>
<b>COMPRESSOR</b>	<b>: CSIR , 4.50 CC</b>

# HOT CASE (CHAIR CAR)

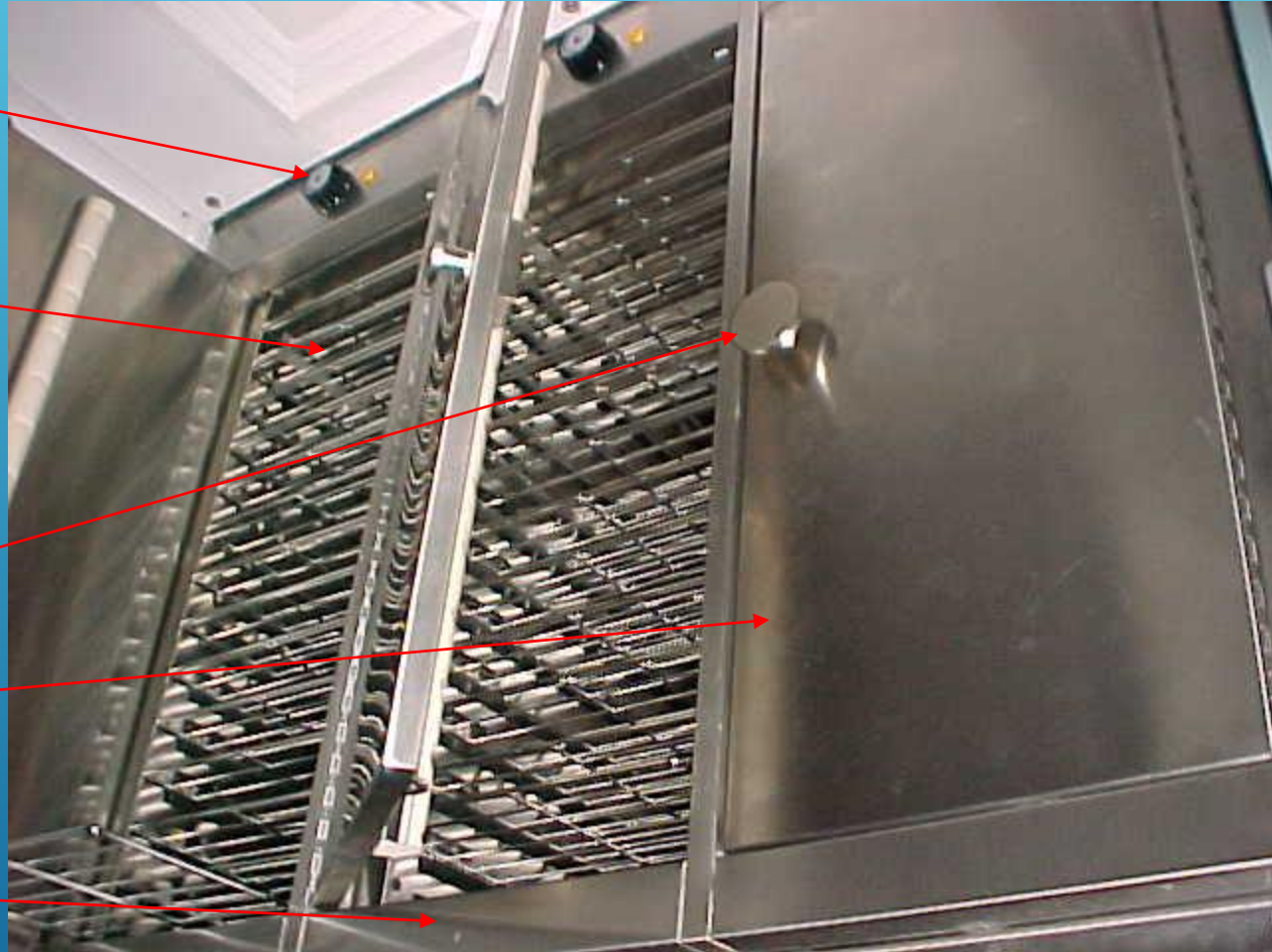
THERMOSTAT

TRAYS

KNOB WITH  
LOCKING  
ARRANGEMENT

DOOR

CABINET



## **HOT CASE**

**DIMENSIONS : 910X1092X600MM**

**POWER : 230V+/-10%,50HZ**

**HEATING ELEMENT : 3 x 500W**

**HOT AIR BLOWER: 230V+/-10%,50HZ, CLASS-H**

**OPERATING TEMP. : 80 DEG.C**

**THERMOSTAT : 30 - 80 DEG.C**

**THERMAL INSULATION : BONDED MINERAL WOOL**

**TRAYS : 84 NOS. 3ØX280mmX250mm STAINLESS STEEL**

**WIRE MESH**

# AC CHAIR CAR PANTRY

**WATER BOILER**



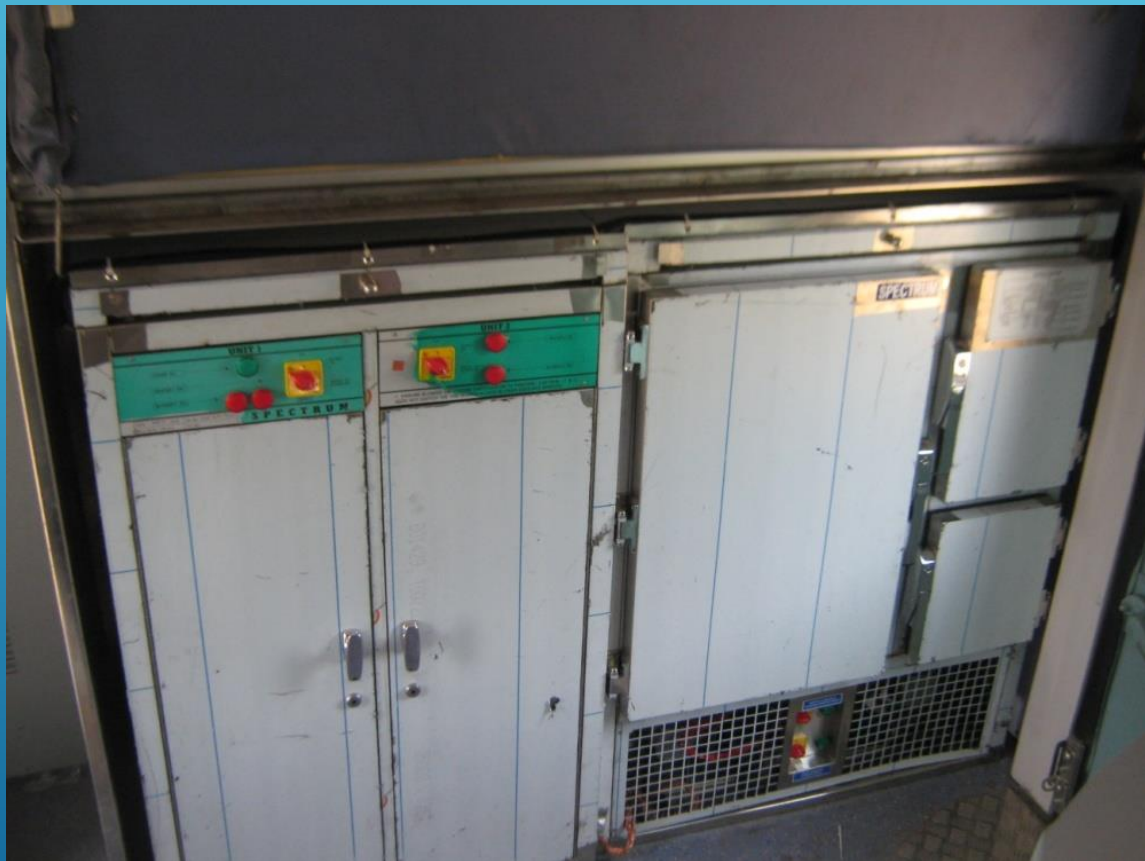
**CUP-BOARD**

**SOUP WARMER**

# NON-AC PANTRY



# AC-2T,3T PANTRY





# AC HOT BUFFET COACH



CHIMNEY

REFRIGERATOR

HOT PLATE

HOT WATER  
BOILER

DEEP FREEZER

STORAGE BIN

## WATER FILTER

