

SALIENT FEATURES OF LHB COACH



NEW GENERATION COACHES



LHB DESIGN COACHES



NEED FOR **NEW TECHNOLOGY- I**

INDIAN RAILWAY HAS BEEN MANUFACTURING PASSENGER COACHES OF “SCHLIRIEN” DESIGN FOR MORE THAN LAST 50 YEARS.

ALTHOUGH CONTINUOUS EFFORTS WERE BEING PUT TO UPGRADE THESE COACHES, BUT A NEED WAS ALWAYS FELT TO IMBIBE TECHNOLOGY IN-USE DEVELOPED COUNTRIES SO AS TO AFFECT A QUANTUM JUMP IN QUALITY OF COACHES.

NEED FOR **NEW TECHNOLOGY - II**

THIS WAS THE BASIC REASON BEHIND SETTING UP OF “RAIL COACH FACTORY” AT KAPURTHALA.

EXTENSIVE STUDIES WERE DONE TO LOCATE THE RIGHT TECHNOLOGY FOR INDIAN CONDITIONS.

TWO CONTRACTS FOR TRANSFER OF TECHNOLOGY AND SUPPLY OF FIRST TWO RAKES (24 COACHES) WERE SIGNED WITH M/S LINKE HOFFMAN BUSH(LHB) (NOW ALSTOM LHB), GERMANY IN 1995.

ALSTOM -LHB, GERMANY

“M/S ALSTOM LHB” ARE ONE OF THE LEADING MANUFACTURER IN TRANSPORT SECTOR HAVING PRESENCE IN MOST OF THE EUROPEAN COUNTRIES.

COACHES MANUFACTURED BY THEM ARE RUNNING IN MANY COUNTRIES ACROSS THE GLOBE.

FOR THIS CONTRACT THE BOGIES WERE DESIGNED AND MADE BY M/S FABRICA ITALIANA d e AUTIMOBELE TORINO (FIAT), SWITZERLAND WHICH IS NOW A PART OF ALSTOM GROUP.

SUPPLY CONTRACT

COVERED SUPPLY OF

- 19 SECOND CLASS AC CHAIR CAR COACHES.**
- 2 EXECUTIVE CLASS CHAIR CAR COACHES.**
- 3 GENERATOR CUM BRAKE VANS**

CONTRACT FOR **TRANSFER OF TECHNOLOGY -I**

COVERED THE FOLLOWING :

- TRANSFER OF TECHNOLOGY FOR ALL COACHES SUPPLIED BY THEM i.e. CHAIR CAR AND POWER CAR**
- DEVELOPMENT OF LAYOUTS AND KEY DESIGNS FOR CARBODY SHELLS FOR**
 - AC FIRST CLASS**
 - AC TWO TIER SLEEPER**
 - AC HOT BUFFET CAR**

CONTRACT FOR **TRANSFER OF TECHNOLOGY -II**

IT ALSO COVERED

– ASSISTING RCF IN

- DEVELOPING AND MANUFACTURING ALL ABOVE COACHES**
- DEVELOPING “SG” VERSION OF FIAT BOGIE**
- ESTABLISHING INDIGENOUS SOURCES OF BOUGHT-OUT ITEMS.**

– PROVIDING TRAINING TO “IR” PERSONNEL IN MANUFACTURE AND MAINTENANCE OF THESE COACHES.



LHB COACH EXTERIOR VIEW (IMPORTED)

HOW IT BENEFITS
RAILWAYS

A LONGER COACH

LHB COACHES ARE APPROXIMATELY 2-METERS LONGER THAN THE CONVENTIONAL ICF TYPE COACHES.

***THIS MEANS "MORE TRAVEL SPACE"
"INCREASED SEATING CAPACITY",
"WIDER BAYS AND DOORWAYS" ETC.***

A LONGER COACH

LHB COACHES ARE APPROXIMATELY 2-METERS LONGER THAN THE CONVENTIONAL ICF TYPE COACHES.

***THIS MEANS "MORE TRAVEL SPACE"
"INCREASED SEATING CAPACITY",
"WIDER BAYS AND DOORWAYS" ETC.***

A LIGHTER COACH

PER METER LENGTH, WEIGHT OF LHB COACH IS APPROXIMATELY “10%” LESSER THAN THE CONVENTIONAL COACH.

THIS NOT ONLY MEANS LOWER HAULAGE COSTS BUT ALSO LESS WEAR AND TEAR OF THE COACHES AND TRACK.

A HIGHER SPEED COACH

LHB COACHES ARE DESIGNED TO RUN AT A MAXIMUM SPEED OF 180 KMPH.

EVEN FOR SPEEDS OF 200 KMPH, NO MAJOR CHANGES ARE REQUIRED

LESSER MAINTENANCE

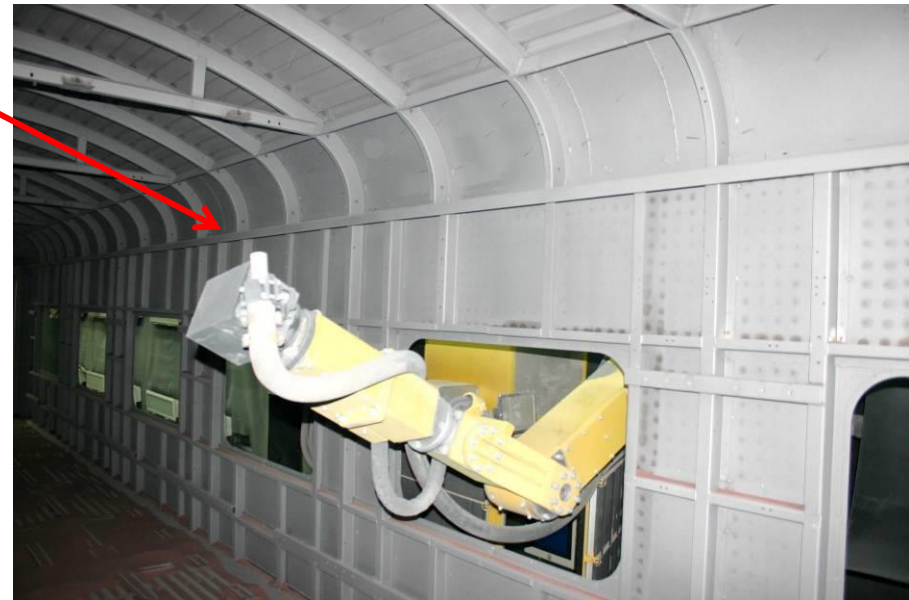
- \$ USE OF SUPERIOR MATERIALS WITH LONGER LIFE.**
- \$ SUPERIOR BRAKING WITH WHEEL SLIDE PROTECTION.**
- \$ BOGIE WITH LESS MOVING PARTS.**
- \$ ITEMS OF WEAR & TEAR SHALL NOT REQUIRE REPLACEMENT/RENEWAL BEFORE 10LAKH KMs.**
- \$ USE OF STAINLESS STEEL AND LESS BOGIE MOVING PARTS SHALL REDUCE MAINTENANCE REQUIREMENTS.**
- \$ ENTRANCE DOORS FLUSH WITH SIDE WALL ALLOWING AUTOMATIC CAR WASHING.**
- \$ CORROSION ALMOST FREE DUE TO EXTENSIVE USE OF STAINLESS STEEL AND SURFACE PROTECTION MEASURES.**



Stainless Steel Shell

MANUFACTURING TECHNIQUES

- Gluing of window frame to shell body
- Robotic garnet blasting of shell

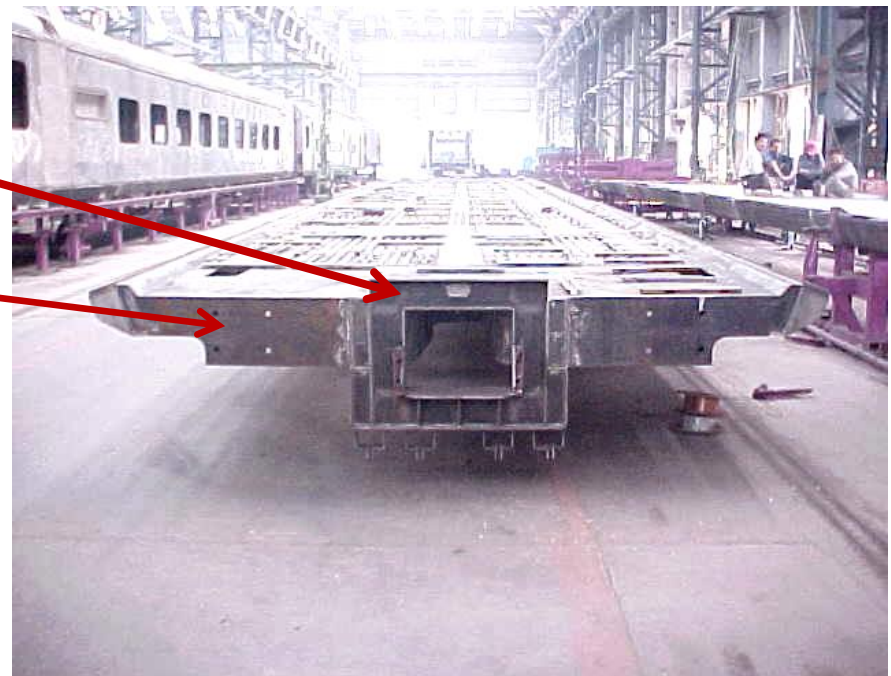


Manufacturing Techniques

**Flooring Support
Members on
Under-frame**

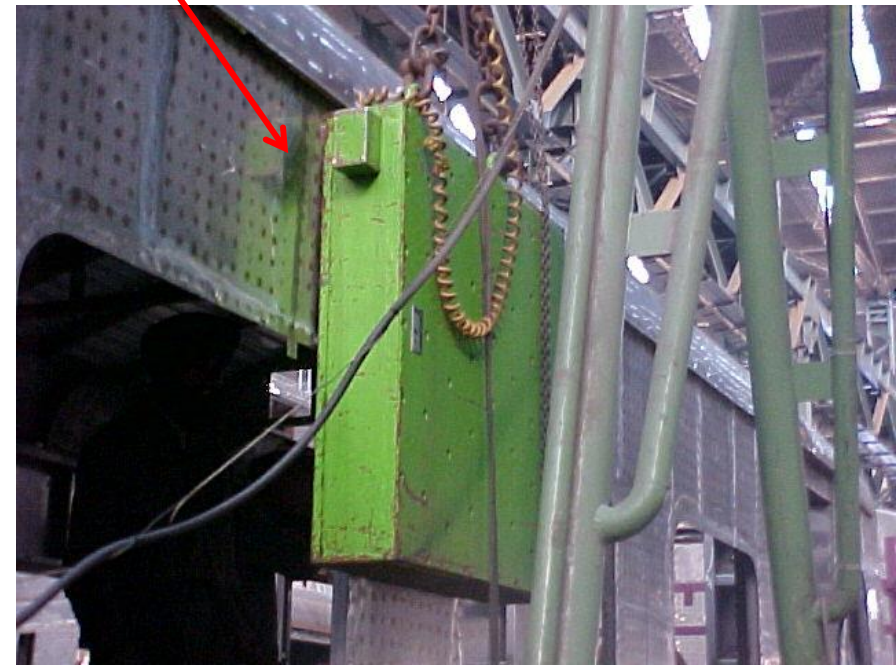
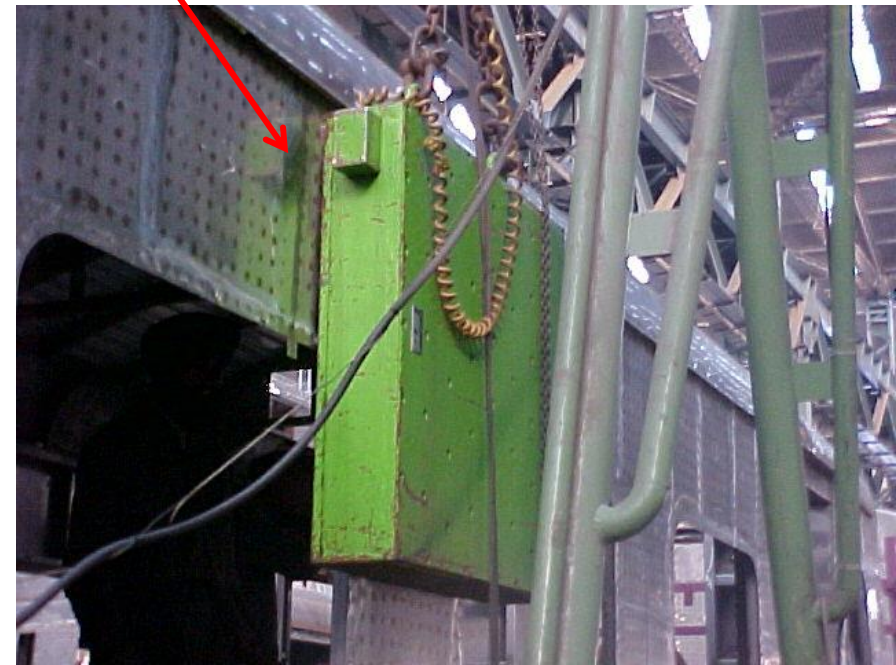
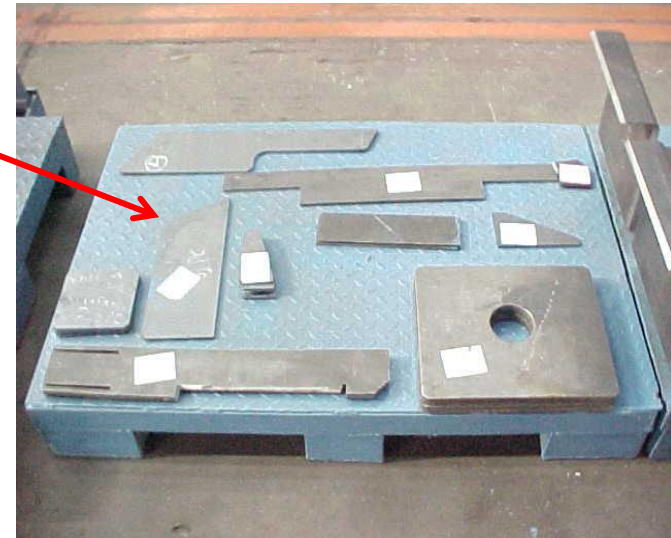


**Provision for CBC
as well a side
buffer mounting in
head stock**



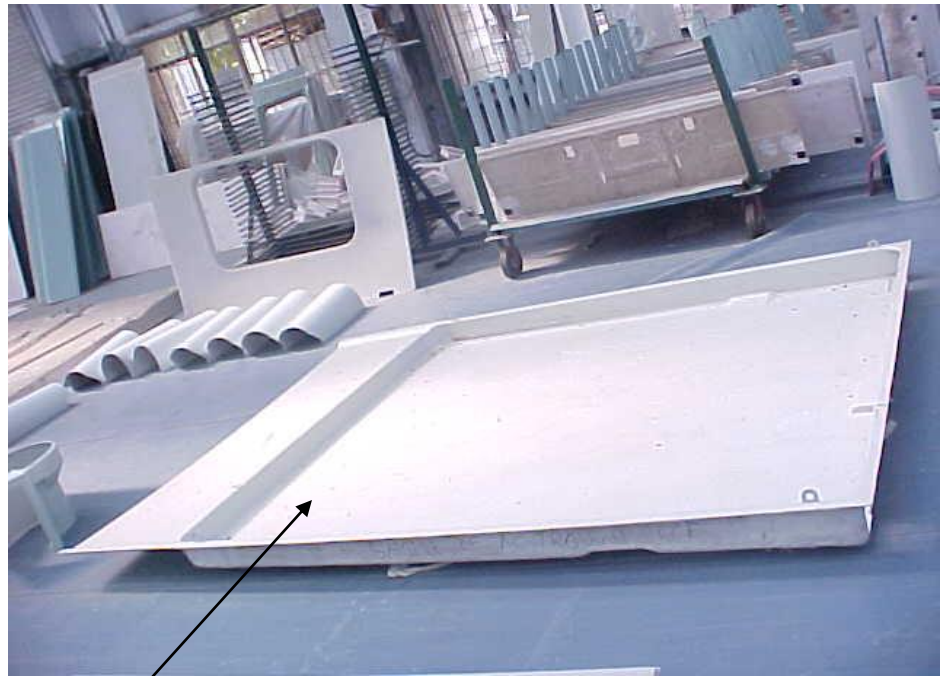
MANUFACTURING TECHNIQUES

- **Laser Profile Cutting Of Components.**
- **Magnetic Skin Tensioning Of Shell.**
- **Side-Wall / Roof Spot Welding.**



FRP ITEMS

- **NO. OF FIRE RETARDENT FRP ITEMS HAVE BEEN USED IN THE INTERIORS FOR**
 - **IMPROVED AESTHETICS**
 - **ABILITY OF FRP TO BE MOULDED INTO INTRICATE SHAPES/CURVED SURFACES, AVOIDS JOINTS**
 - **BETTER STRENGTH TO WT RATIO**
 - **SCRATCH RESISTANCE**
 - **RESILIENCE TO SMALL DENTS**
 - **EASY REPAIREABILITY**



**FRP LAVATORY MODULE
(PVC FOAM SANDWICHED BETWEEN FRP)**

FRP, AC UNIT TROUGH

FRP SIDE WALL PANEL

FIRE RETARDANT MATERIAL USED IN COACHES

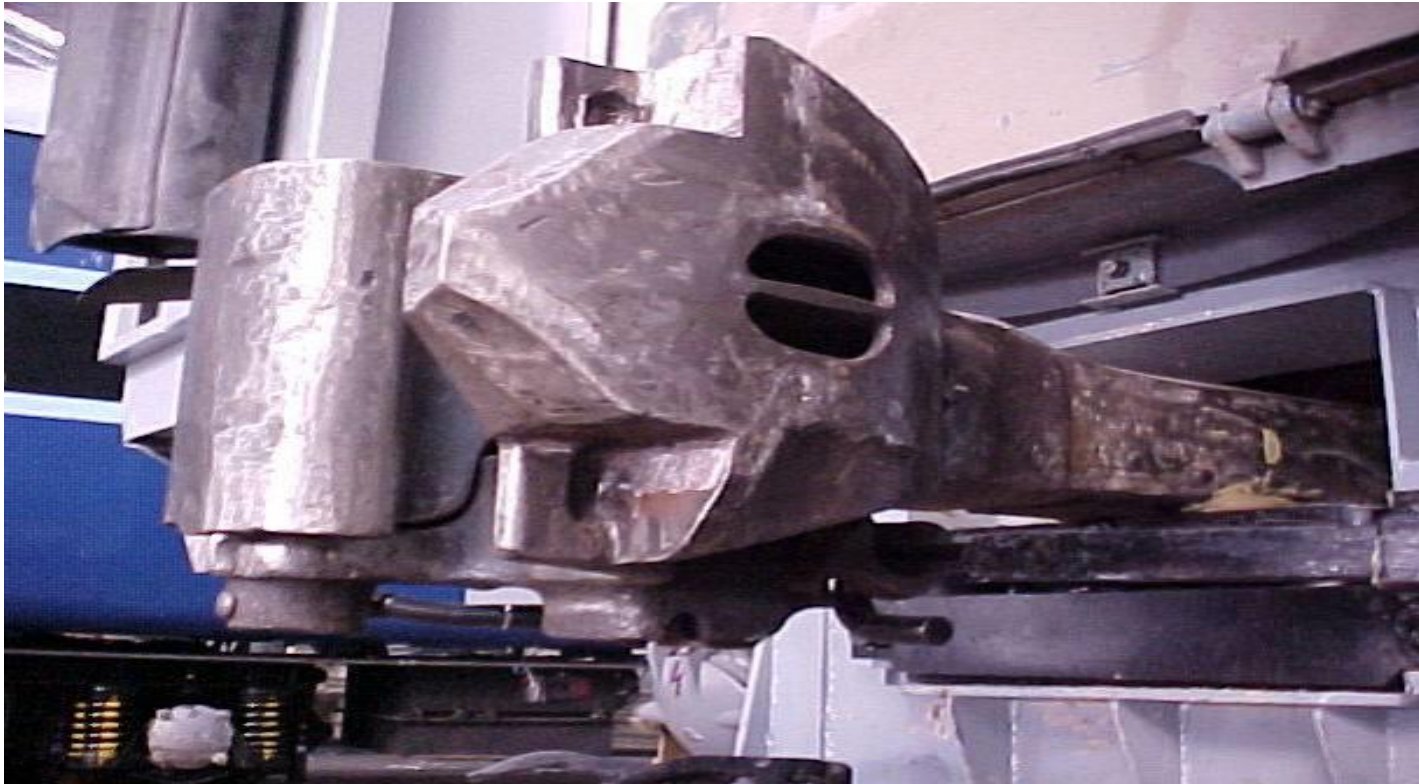
Description	RDSO Spec No.
Wood based impregnated compressed laminates (compreg)	C-9407 (Rev.3)
Fire retardant upholstery cloth	C-9901
Fire retardant curtain fabric	C-9911
NFTC roof ceiling	C-K511
Decorative thermosetting synthetic resin bonded laminated sheets (LP sheets) for interior furnishing of coaches.	C-K514
Densified thermal bonded polyester blocks for use in railway coaches for seats and berths	C-K607
Flexible vinyl flooring (PVC) for use in coaching stock.	RDSO/2006/CG-12
Fibre glass reinforced plastic (FRP) windows of BG mainline coaches.	RDSO/2007/CG-02
UIC type elastomer flange connection between passenger coaches of Indian Railways.	RDSO/2007/CG-05

WINDOWS



TIGHT-LOCK CENTRE BUFFER COUPLER

- **AAR H-type coupler**
 - Vertical interlocking provides anti climbing feature
- **Adequate strength for hauling :**
 - 26 coaches at 110 kmph
 - 18 coaches at 160 kmph



**HOW IT
BENEFITS THE
PASSENGER**

BETTER RIDE QUALITY

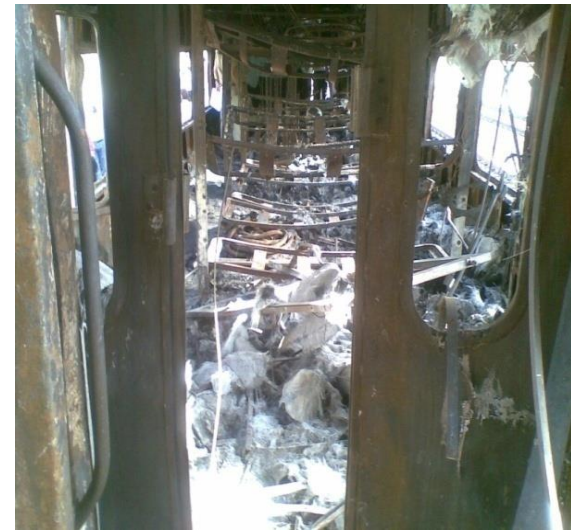
- ▣ **IMPROVED RIDE COMFORT - RIDE INDEX** *(The Quantative Measure of a Ride Quality is Interpreted as the Capability of Vehicle Suspension to Maintain the Motion within range of Human Comforts. It is Affected by Many Factors Such as Vibrations, Acoustic Noise, Smell,, Temperature, Humidity and Seat Designing)*
REDUCED FROM OVER 3.0 TO 2.5 AT A SPEED OF 160 KMPH.
- ▣ **PLUSH INTERIORS OF INTERNATIONAL STANDARDS.**
- ▣ **IMPROVED AIR-CONDITIONING THROUGH BETTER DUCT DESIGNING & HUMIDITY CONTROL.**
- ▣ **BIGGER SIZE SEALED WINDOWS FILLED WITH “ARGON” GAS FOR A PANORAMIC VIEW & HEAT INSULATION.**
- ▣ **MODULAR “ORIENTAL” & “WESTERN” STYLE TOILETS WITH “CDTS” TO AVOID SOILING OF STATION PREMISES.**
- ▣ **WELL EQUIPPED PANTRY WITH HOT CASES, DEEP FREEZER, BOTTLE COOLERS ETC.**
- ▣ **FLUSH TYPE SWIVELING BERTH READING LIGHT.**
- ▣ **POLYCARBONATE TRANSPARENT CENTRE TABLES.**

MORE SAFE

- SAFETY OF PASSENGERS IS OF PARAMOUNT IMPORTANCE, SO A NUMBER OF PRECAUTIONARY MEASURES HAVE BEEN ADOPTED IN LHB DESIGN COACHES , LIKE :-
 - ❑ FOUR EMERGENCY EXIT WINDOWS FOR FASTER PASSENGER EVACUATION DURING EMERGEN-CIES.
 - ❑ WIDER VESTIBULE DESIGN FOR SMOOTH INTER COACH MAVEMENT.
 - ❑ CONVENIENT TO OPERATE EMERGENCY ALARM PULL OPERATION AND FIRE RETARDANT FURNISHING.
 - ❑ TIGHT LOCK CENTRE BUFFER COUPLER MAKES COACHES ANTI-CLIMBING.
 - ❑ SUPERIOR BRAKING SYSTEM.
 - ❑ FIRE RETARDANT MATERIALS.
 - ❑ PROPER COACH EARTHING.
 - ❑ PUBLIC ADDRESS SYSTEM.
 - ❑ SMOKE & FIRE ALARM SYSTEM
 - ❑ EMERGENCY ACCIDENT LIGHT

EARLY FIRE AND SMOKE DETECTION SYSTEM

- Plan to provide Early Fire and Smoke Detection System on 20 rakes
- Coach unit will detect presence of smoke at very early stage by sampling air
- Will activate audio visual alarm
- Heat activated sensors for toilets
- Central Monitoring of all the coaches



FIRE & SMOKE DETECTION & EARLY WARNING SYSTEM



- ★ VESDA Capillary Sampling Point (15 Nos.) ■ VESDA Detector – VLC 505 (1 No.)
- ✦ VESDA Heat Activated Sampling Point (4 Nos.)
- VESDA Sampling Hole (1 No.)

आपात निकास
EMERGENCY EXIT

Vestibule door

Pantry door

Fire Extinguisher

**Antiskid PVC
flooring**



**FIRE EXTINGUISHER
PROVIDED IN THE
ENTRANCE AREA**



SUPERIOR
AESTHETICS



LHB COACH INTERIOR

SWITCH BOARD CABINET





LUGGAGE RACK

**European
Style
Toilet**



**Indian
Style
Toilet**





COAT HOOK PROVIDED IN LAVATORY

**PASSENGER
COMFORTS**





BACK SIDE OF SEAT



ATTENDANT SEAT



Reading lights provided in Luggage Rack

**Sliding Coat
hooks
provided in
Luggage
Rack**

Screw less Modular interiors



**PASSENGER
CONVENIENCE**

**SPACIOUS
ENTRANCE
AREA**



**AIR DIFFUSER
PROVIDED IN
CEILING OF
LAVATORY**



**LAVATORY ENGAGED
INDICATOR IN
PASSENGER AREA**



**WIDER
PASSENGER
COMPARTMENT
DOOR**

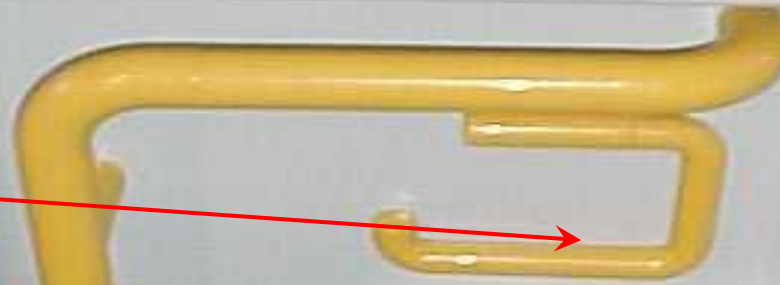
**WITH BIGGER
GLASS UNIT**



**Flush Button/
Switch**



**Toilet Paper
Holder**



Hand Grip



**Water for
toilet use**



**Ashtray or
Lotah**



Drain



110V/220V

**Socket for
shaver**

**Push button for
water supply**

**Water outlet
for hand wash**

**Soap
Dispenser**



**AIR
DIFFUSER**

MIRROR

**FLUORESCENT
LIGHT**

ASH TRAY

WASH BASIN



**DETAILED DESIGN
FEATURES OF**

LHB

COACH

LHB COACH DESIGN

MAJOR FEATURES

- ➔ **LENGTH OVER BODY** = 23540 mm (21337mm)
- ➔ **MAX. DISTANCE BETWEEN INNER WHEELS** = 12345 mm (11887mm)
- ➔ **MAX. BUFFER DROP** = 75 mm
- ➔ **MAX. TARE WEIGHT** = 40.287 t
- ➔ **NO OF PASSENGERS** = 78 (2ND AC C.CAR)
= 56 (EXEC. AC C.CAR)
- ➔ **TEST SPEED POTENTIAL** = 180 KMPH
- ➔ **RIDE INDEX OF COACH** = **2.5** BUT NOT EXCEEDING **2.75**
- ➔ **FLOATING FLOOR** = DUE TO D-COUPLING ELEMENT
- ➔ **REDUCED SPACE BETWEEN COACHES** = LOWER WIND RESISTANCE
- ➔ **MAINTENANCE CRITERION** = ITEMS OF WEAR & TEAR SHALL NOT REQUIRE REPLACEMENT / RENEWAL BEFORE 1 MILLION KMs.

USE OF STAINLESS STEEL AND LESS BOGIE MOVING PARTS SHALL REDUCE MAINTENANCE REQUIREMENTS

AT A GLANCE COMPARISON OF WEIGHT AND CAPACITY

	Weight (T)	Capacity		Weight (T)	Capacity
LHB/EOG			ICF/EOG		
FAC	43.3	24	FAC	46.2	18
ACCW	44.6	52	ACCW	44.8	48
ACCN	45.6	72	ACCN	48.3	64
CB	40.9	0	CB	47.9	0
WLRRM	53	0	WLRRM	60	0
	728.7	736		779.3	658

LHB WEIGHS LESS BY 50.6 TONNES

CAPACITY MORE BY 78 PASSENGERS

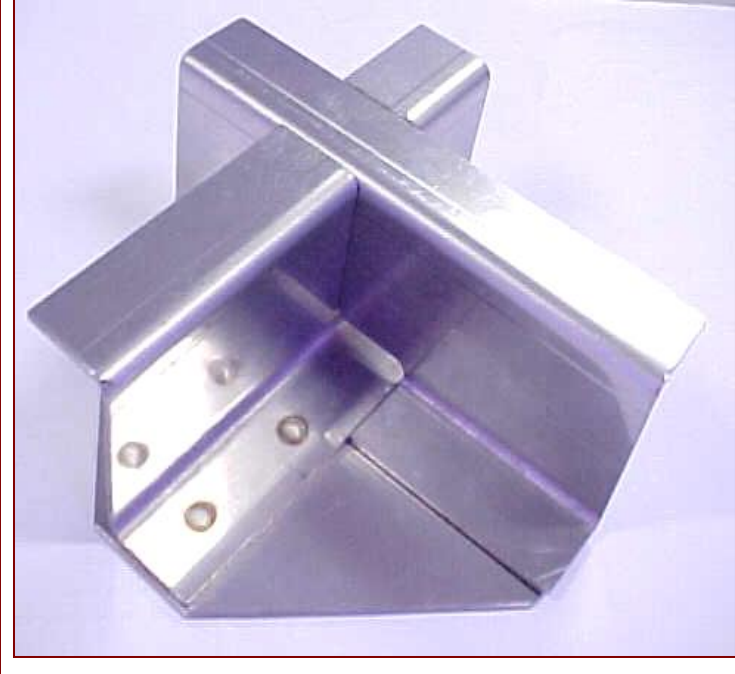
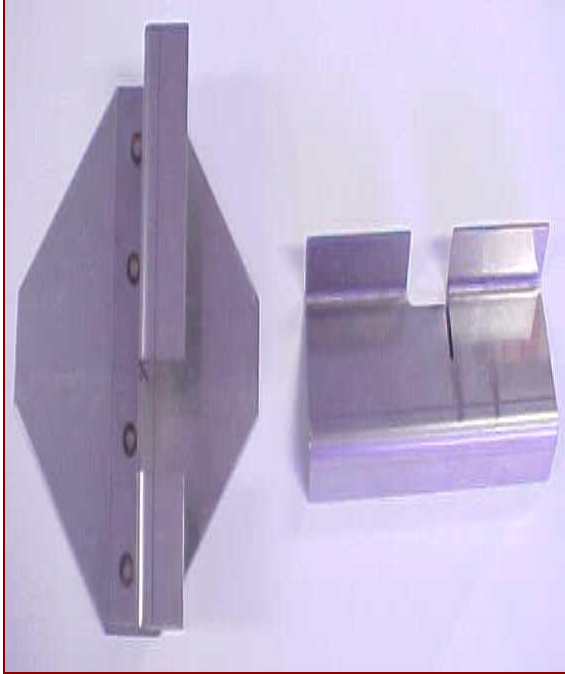
COACH SHELL

● STAINLESS STEEL MATERIAL

- **SIDEWALL & ROOF STRUCTURAL MEMBERS IN FERRITIC STEEL**
- **SIDEWALL AND ENDWALL SHEETS OF FERRITIC STEEL**
- **ROOF SHEET & TROUGH FLOOR IN AUSTENITIC STEEL**
- **IRSM-41 STEEL FOR ALL OTHER STRUCTURAL MEMBERS. 6 MM SOLE BAR.**

● STRUCTURAL JOINTS

- **INTER-LOCKING JOINTS OF VERTICAL & HORIZONTAL MEMBERS**



☞ **INTERLOCKING BETWEEN THE HORIZONTAL AND VERTICAL STIFFENING MEMBERS OF SUB ASSEMBLIES LIKE SIDE WALL, END WALL, UNDER FRAME, ETC.**

☞ **ALIGNED STRESS FLOW**

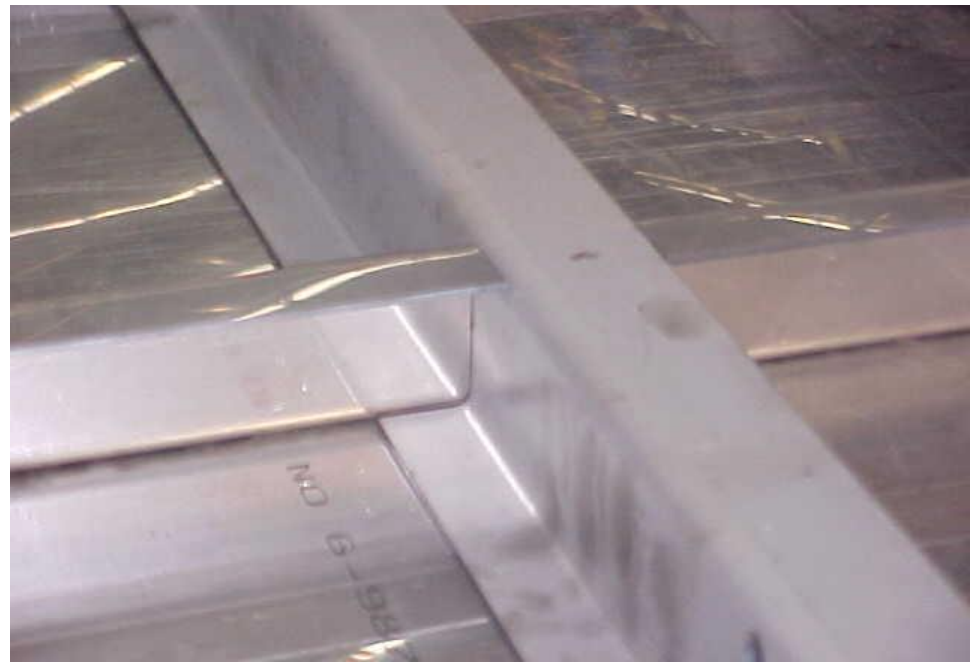
☞ **BETTER STRENGTH**

☞ **REDUCTION OF SIDE WALL WIDTH FROM 90 MM TO 60MM**

☞ **BETTER GEOMETRICAL INTEGRITY**

RESISTANCE TO DISTORTION

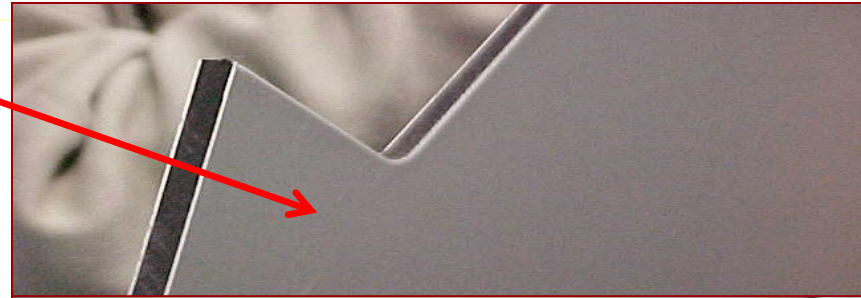
INTERLOCKING OF JOINTS



USE OF COMPOSITE MATERIALS

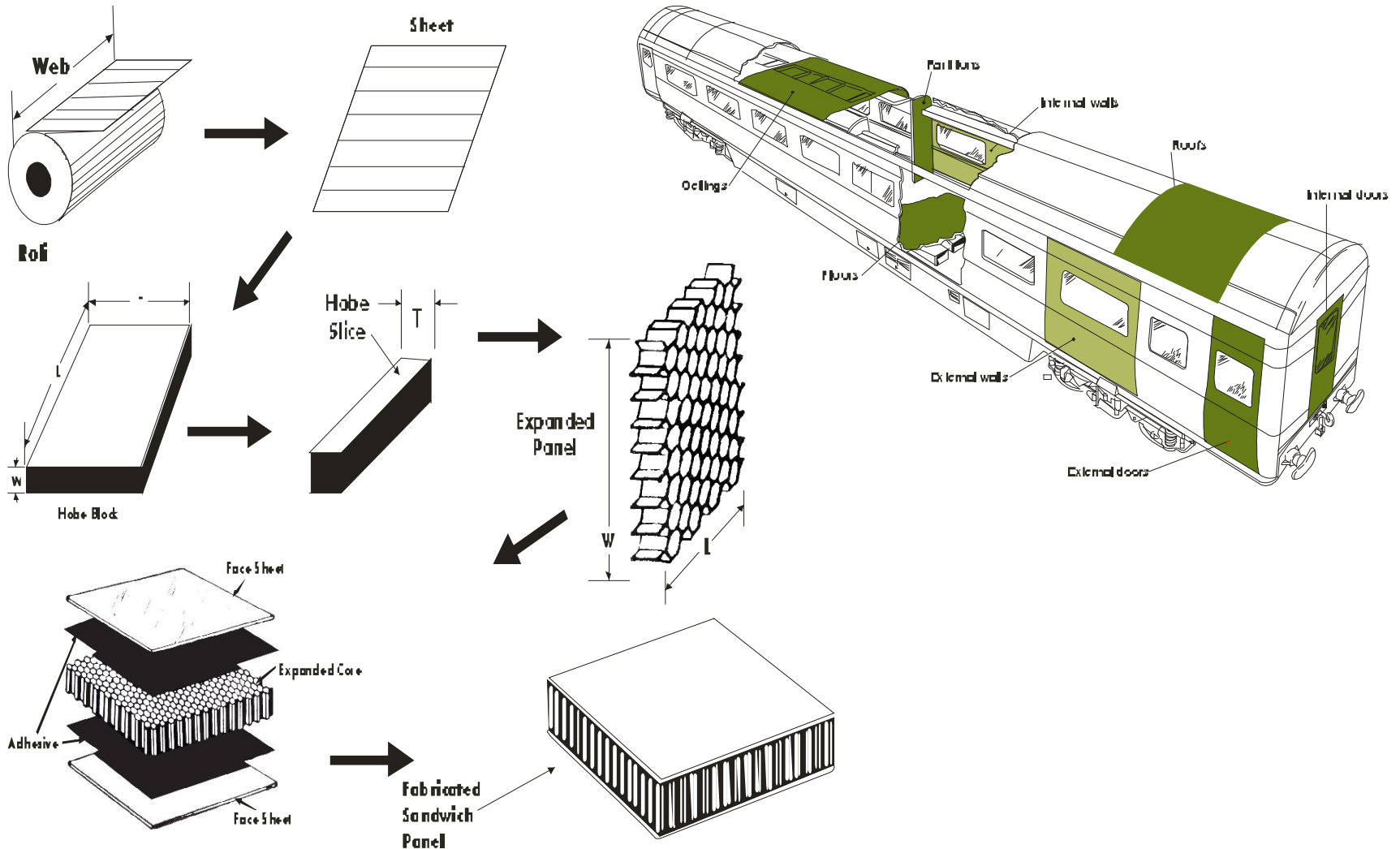
“ALUCOBOND” LAVATORY CEILING PANEL & ALUMINIUM HONEY COMB PARTITION PANELS

- ☆ **IMPROVED AESTHETICS**
- ☆ **VERY GOOD SURFACE FINISH**
- ☆ **CORROSION RESISTANCE**
- ☆ **BETTER RIGIDITY**
- ☆ **HIGHER STRENGTH TO WEIGHT RATIO**
- ☆ **CAN UNDERGO PROCESSES SUCH AS ROLLING, BENDING, CUTTING, WELDING ETC. WITHOUT LOSING OUT ON IT'S PROPERTIES**

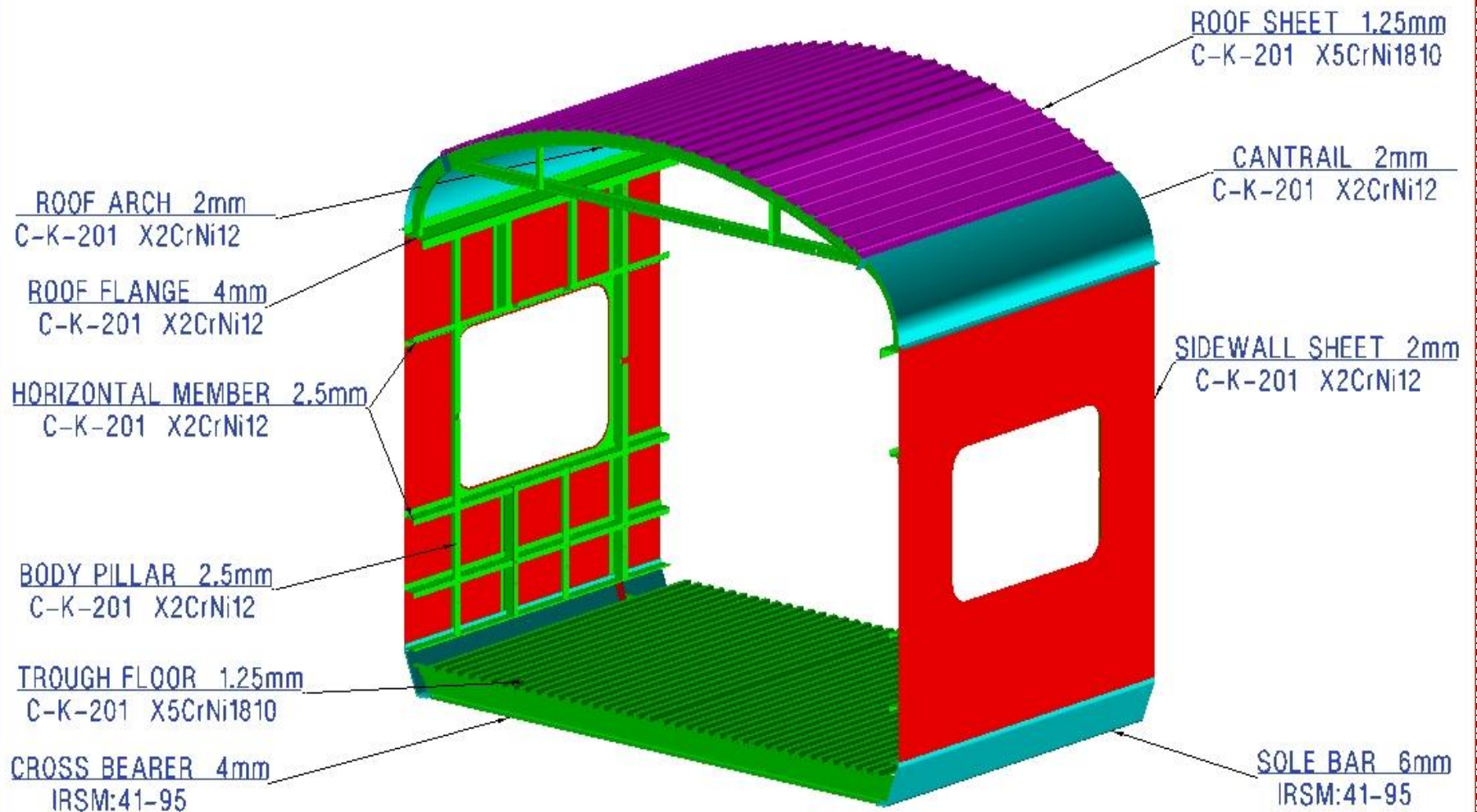


**FLOOR BOARDS 4 MM CORK
SANDWICHED BETWEEN
COMPREG TO ABSORB NOISE**

Manufacture of Honeycomb Panel



SHELL STRUCTURE



RUBBER DE-COUPLING ELEMENTS IN FLOORING RESULT IN SUPERIOR NOISE AND VIBRATION ABSORPTION

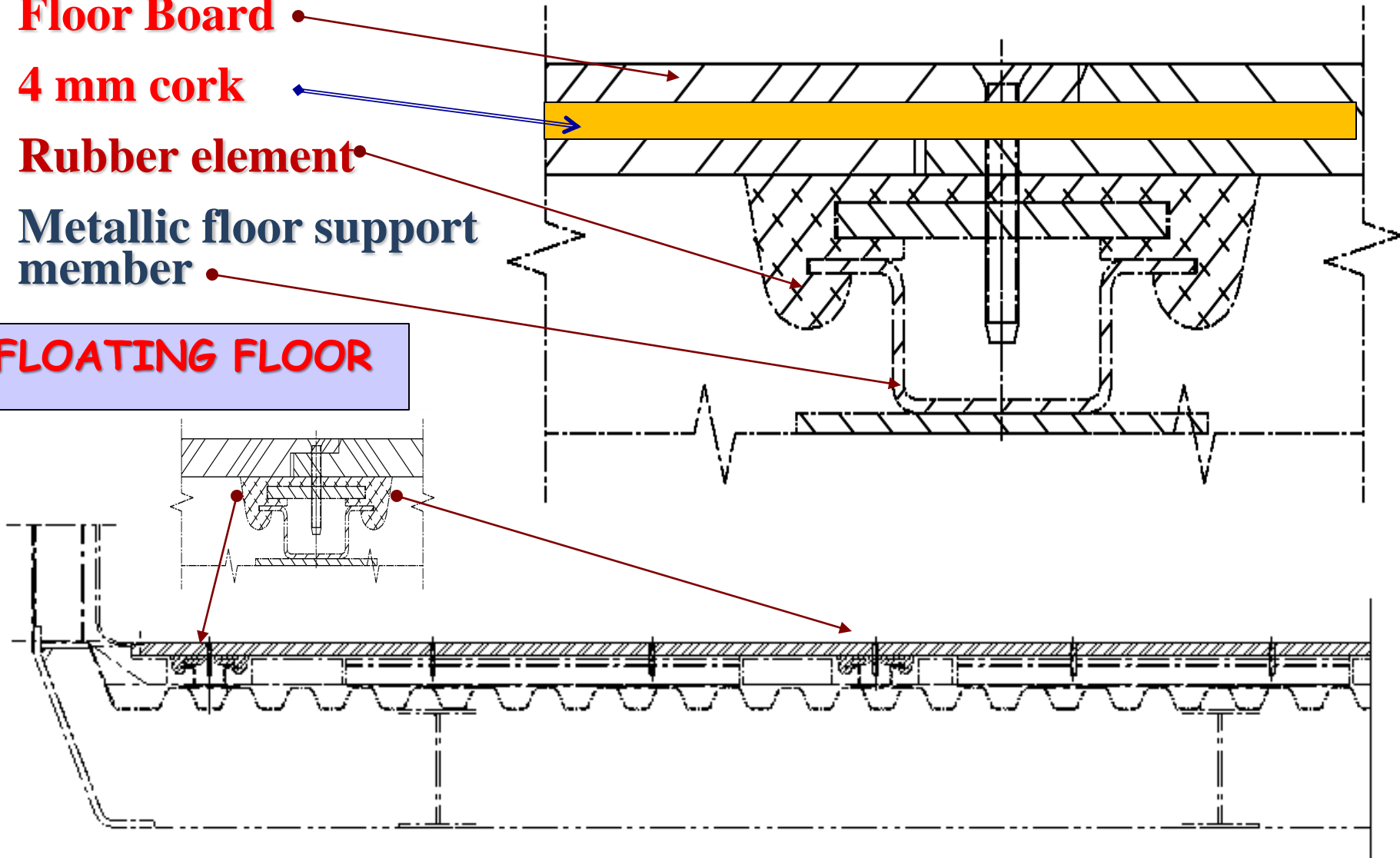
Floor Board

4 mm cork

Rubber element

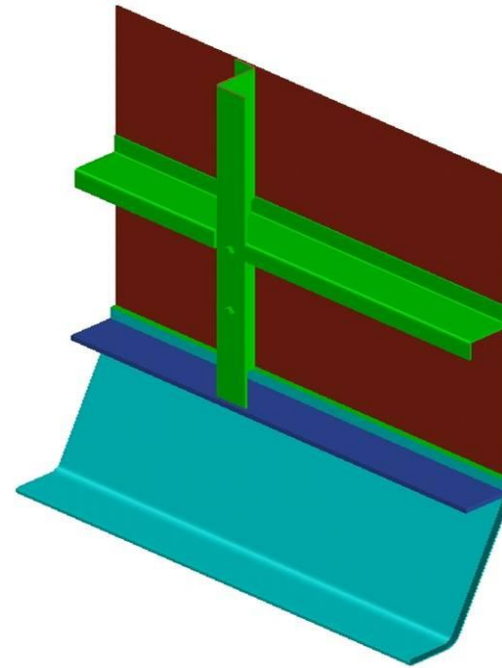
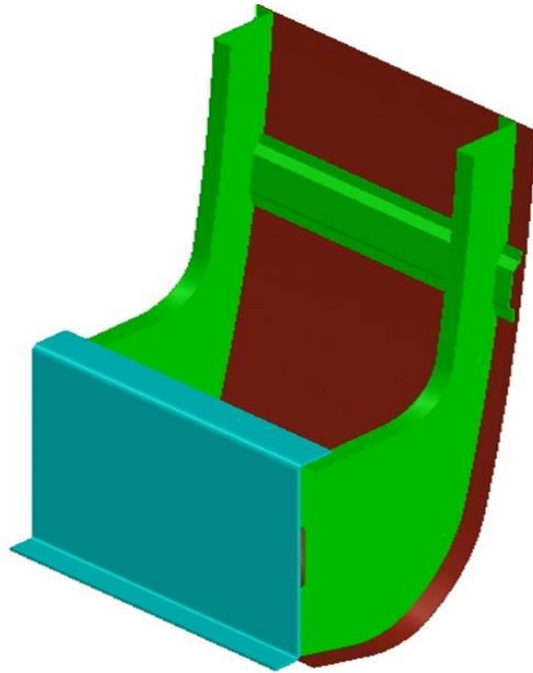
Metallic floor support member

FLOATING FLOOR



SIDEWALL TO UNDER FRAME JOINT

CONVENTIONAL VS. LHB

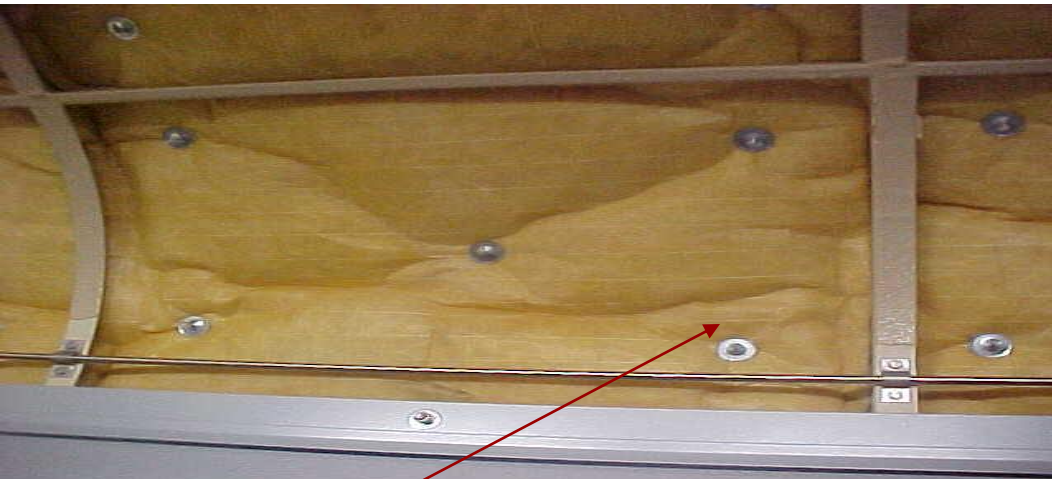


- ☐ **TURN UNDER HAS BEEN ELIMINATED**
- ☐ **CLEAR APPROACH FOR SAND BLASTING AND PAINTING**
- ☐ **NO ACCUMULATION OF WATER AND MUCK**
- ☐ **PILLAR RESTS ON SOLEBAR AS COMPARED TO LOAD TRANSFER THROUGH A VERTICAL WELDED JOINT IN CONV. COACHES**

SHELL CORROSION PROTECTION

- **WELDABLE ALUMINIUM PAINT TO AVOID BI-METALLIC CORROSION**
- **SAND BLASTING AND IMMEDIATE PAINTING**
- **NOISE & CORROSION PROTECTION COAT “BARYSKIN V60DB” SPRAYED ON SHELL INTERIOR**
- **“RESONAFLEX ALU” INSULATION AVOIDS WATER COLLECTION**

**USE OF “RESONAFLEX”
(DIAGONALLY GLUED PLATED
CELLULOSE ACETATE FILM,
LIGHT WEIGHT, HIGH THERMAL
RESISTANCE) ON SIDE WALL &
FLOOR AND GLASS WOOL ON
ROOF AND SIDE WALL (ABOVE
WINDOW) PROVIDE HEAT
INSULATION
RESONAFLEX ON UNDER FRAME
PREVENTS WATER ABSORPTION/
RETENTION.**



**GLASS WOOL PADS HELD BY PINS, WELDED ON
THE ROOF**

RESONAFLEX THERMAL INSULATION



Now
rubber
foam is
being used

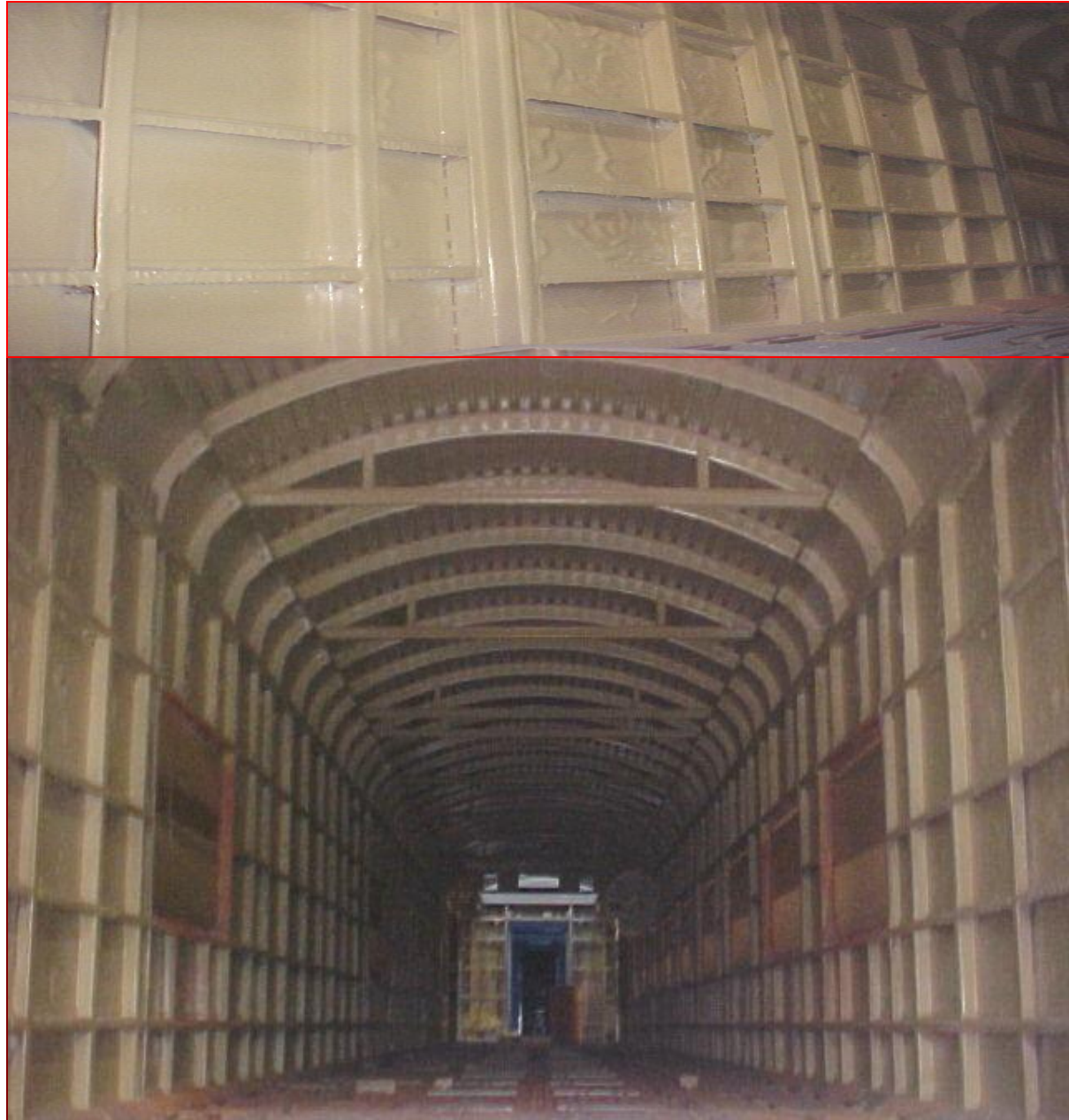
SUPERIOR INSULATION

**“BARYSKIN V60DB” OR
EQ. SOUND INSULATION
PU PAINTS ON FULL
COACH SHELL INTERIOR,
PROVIDE ANTI DRUMMING
SOUND INSULATION AS
WELL AS CORROSION
RESISTANCE.**

SOUND INSULATION OF 31 DB .

**COATING OF 2-3 MM THICKNESS
IN THE COACH INTERIOR, 6-8 MM
IN BODY BOLSTER AREA.**

**EXTREMELY GOOD FIRE
RETARDANCY OF CLASS SR-4 TO
DIN 5510**



BOGIE

DESIGN FEATURES

- ADAPTATION OF EUROFIMA DESIGN FOR IMPROVED RIDE COMFORT.
- DESIGNED FOR OPERATING SPEED OF-160 KMPH , TESTED AT 180 KMPH AND HAS A POTENTIAL FOR OPERATION UPTO - 200KMPH.
- STRUCTURALLY SUPERIOR “Y- FRAME” BOGIE CONSTRUCTION MAKING IT LIGHTER AND YET STRONER.
- IMPROVED PRIMARY AND SECONDARY SUSPENSION FOR SMOOTH AND COMFORTABLE RIDING, OBTAINED BY USE OF FLEXICOIL SPRING.
- DIFFICULT TO MAINTAIN DASH-POT HAS BEEN ELEMENATED.
- EXTENSIVE USE OF ELASTOMERIC RUBBER-METAL COMPONENTS
- EQUIPPED WITH HYDRAULIC SHOCK ABSORBERS CONFORMING TO UIC STANDARD WITH HIGHER LIFE CYCLE RATING.
- AXLE GUIDANCE IS PROVIDED BY AN ARTICULATED CONTROL ARM THROUGH A RESILIENT BUSH WHICH WILL GIVE BETTER NEGOTIATION ON CURVES.

WHEEL, AXLE AND BRAKES

- † FORGED WHEELS TO IRS R-19 OF 915 MM DIA. MAX USABLE WORN DIA 845 MM.**
- † FORGED AXLES.**
- † CARTRIDGE TAPER ROLLER BEARING FOR AXLES OF “TIMKEN MAKE”.**
- † GRADUATED TWIN PIPE RELEASE AXLE MOUNTED DISC BRAKE WITH “EP” FEATURE.**
- † PASSENGER ALARM SYSTEM AVAILABLE WITH 19 MM CHOKE.**

COACH INTERIORS

- ⇒ **ERGONOMICALLY DESIGNED SEATS AS PER INDIAN ANTHROPOMETRIC DATA.**
- ⇒ **LARGE WINDOWS WITH GOOD VISIBILITY.**
- ⇒ **ALUMINIUM LUGGAGE RACKS WITH INBUILT READING LAMPS.**
- ⇒ **INSULATION AGAINST NOISE.**
- ⇒ **USE OF FIRE- RETARDANT FRP FOR PANELLING.**
- ⇒ **HAND-SAFE FEATURE IN ALL AUTOMATIC SLIDING DOORS.**
- ⇒ **ANTI-SKID PVC FLOORING.**
- ⇒ **UIC VESTIBULES AND AUTO CLOSING VESTIBULE DOOR.**

COACH INTERIORS

- ☺ SEATS HAVE POWDER COATED ALUMINUM FRAME. SEAT CUSHION & BACK-REST OF MOULDED "PU FOAM". GAS SPRING USED FOR RECLINING MECHANISM.
- ☺ 16 MM SANDWICH OF "MACORE WOOD & CORK" HAS BEEN USED AS FLOOR PANEL. THIS IS LIGHT WEIGHT, WATER & IMPACT RESISTANT.
- ☺ CONTROLLED DISCHARGE TOILET SYSTEM (CDTS) HAS A MICRO - PROCESSOR CONTROLLED INTERMEDIATE WASTE TANK WHICH DISCHARGES WASTE ONLY AT SPEEDS ABOVE 45 KMPH.
- ☺ INTRODUCED SHORTLY BIO - TOILET SYSTEM IN THE RAILWAY COACHES.

Doors

LHB coach has :

4 body side doors

2 compartment doors

3 lavatory doors

2 vestibule doors

1 pantry door

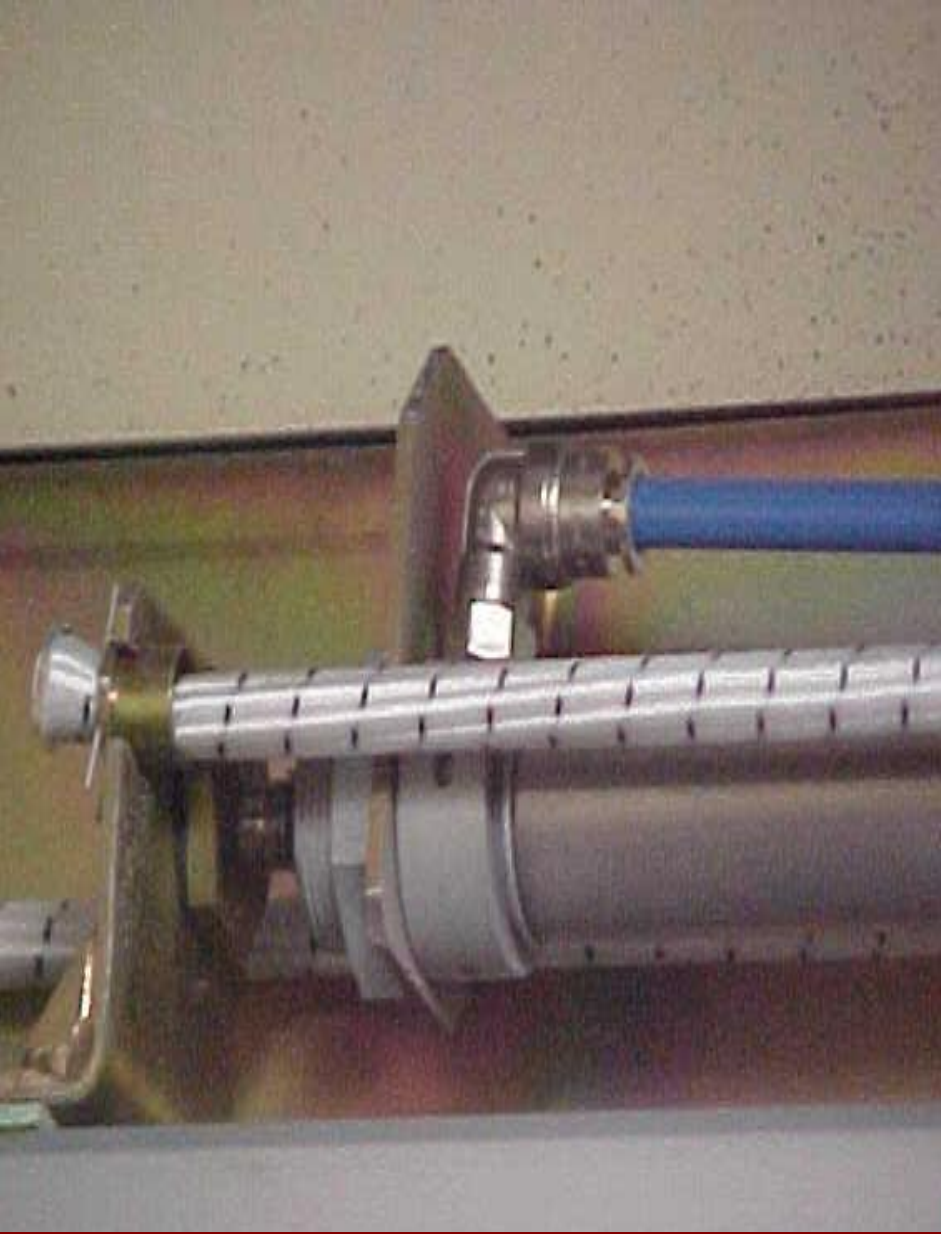
2 Roller shutters for pantry storage area

Doors

- Hinged type swing sandwich doors
- Stainless steel body filled with Phenolic resin for better heat insulation
- Provided with sealed window glass unit.

**COMPARTMENT
DOOR**





SLIDING MECHANISM OF DOOR

**VESTIBULE
DOOR**

**PANTRY
DOOR**



**Storage area
for Serving
Trolley**

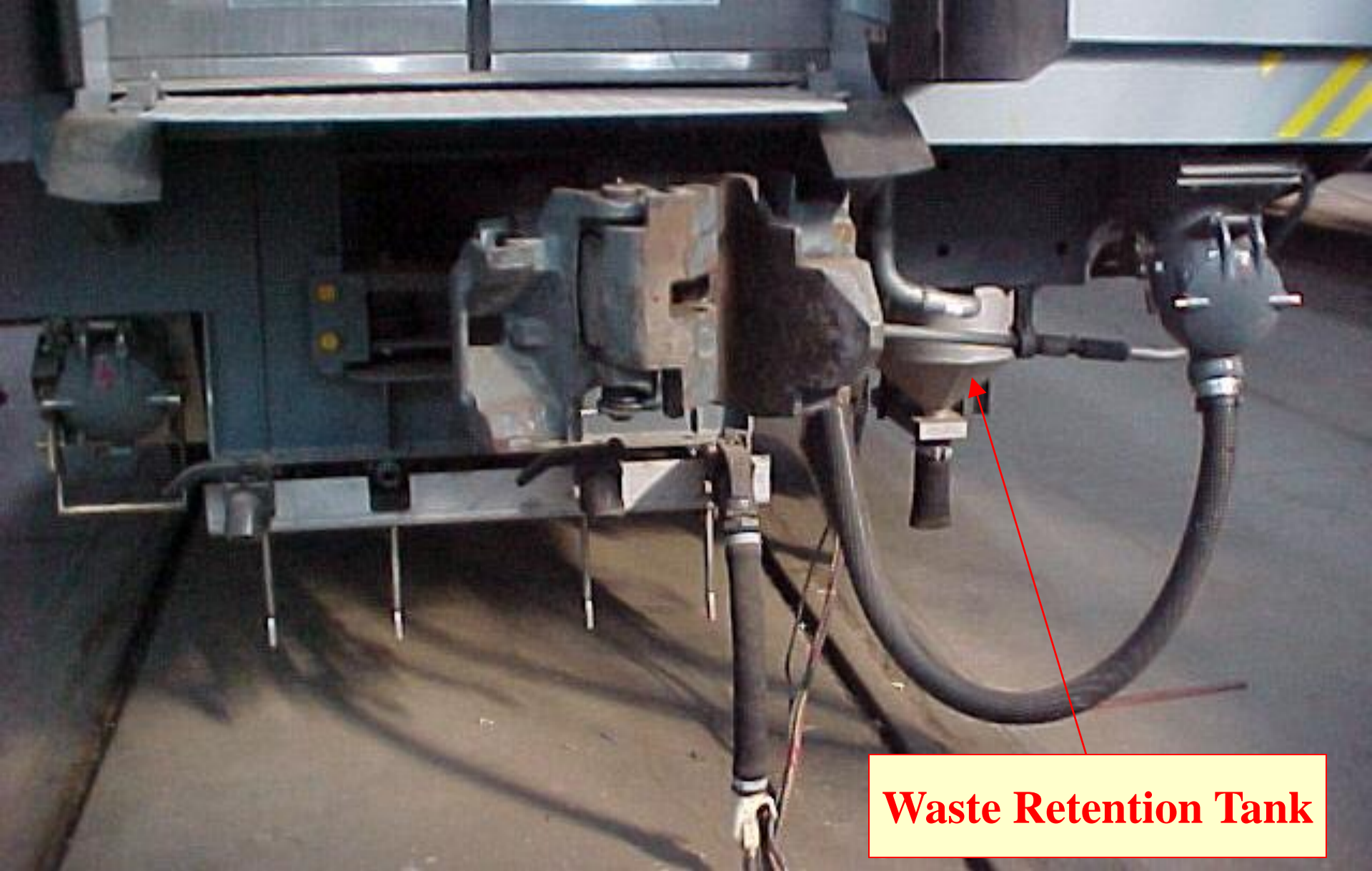


**Storage
area for
Pantry**



LAVATORIES

- ***LHB COACHES HAVE BOTH ORIENTAL AND EUROPEAN TYPE OF LAVATORIES WITH CONTROLLED DISCHARGE TOILET SYSTEM (CDTS).***



Waste Retention Tank

CDTS WASTE RETENTION TANK

**Side view
of Luggage
Rack**

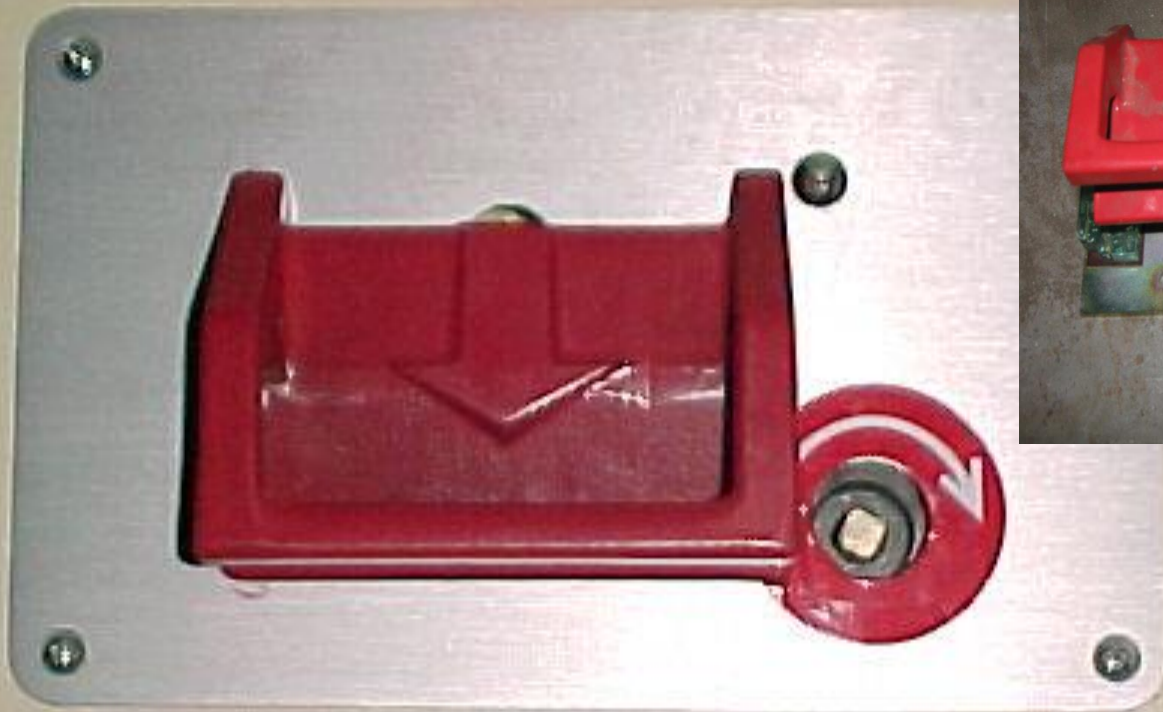


**Reading
lights
provided in
Luggage
Rack**



Passenger Emergency Alarm

- 5 passenger emergency alarms per coach have been provided at following locations:
 - 2 in passenger compartment
 - 3 in lavatories (In earlier supplied coaches only)



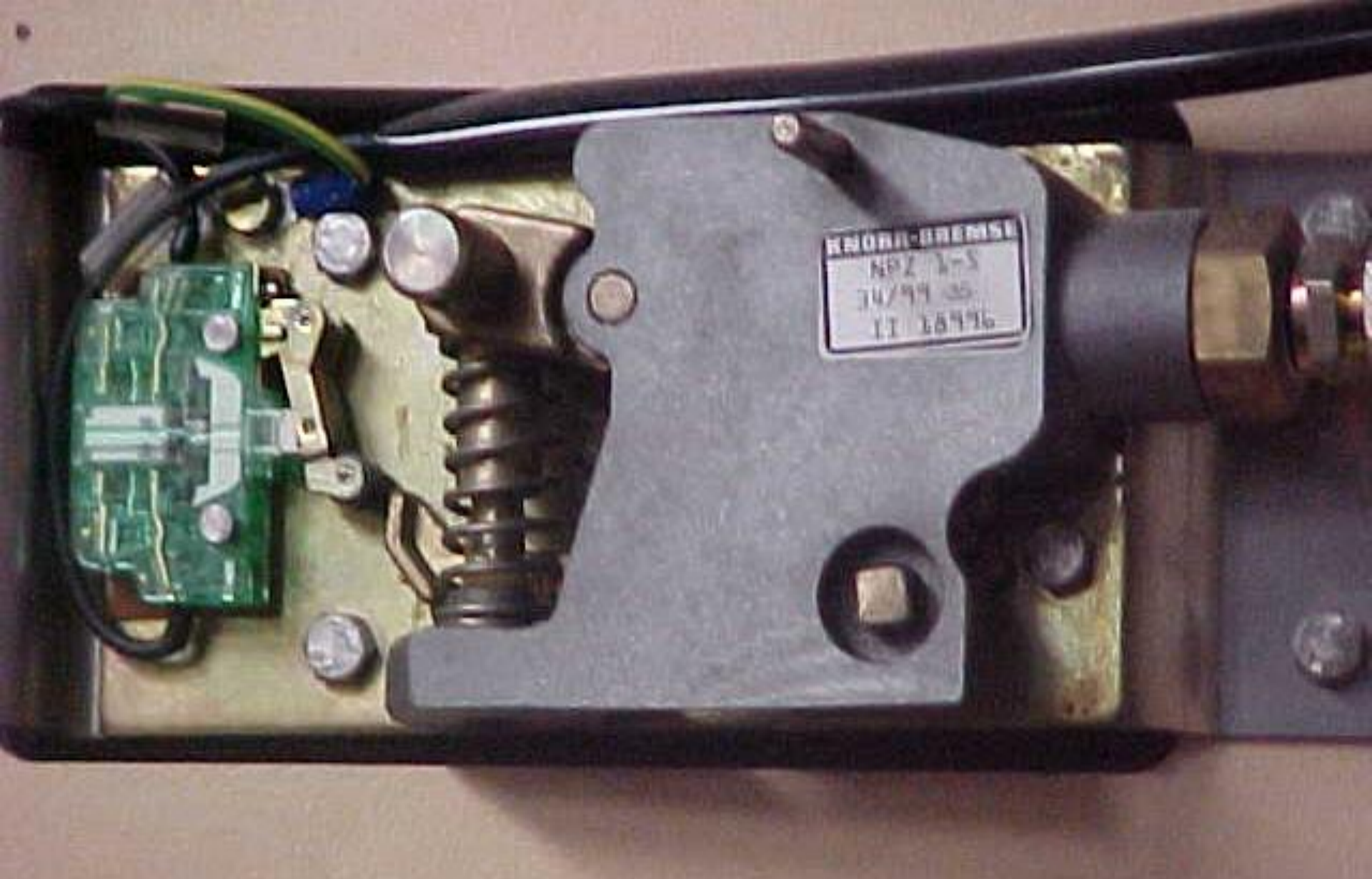
गाड़ी खड़ी करने के लिए हंडिल खींचें

उचित एवं पर्याप्त कारण के बिना हंडिल खींचने की सजा

1000 रुपये तक जुर्माना और / या दस महीने के कैद ।

TO STOP TRAIN PULL HANDLE

**PENALTY FOR USE WITHOUT REASONABLE AND SUFFICIENT
CAUSE FINE UPTO Rs. 1000 AND / OR IMPRISONMENT UPTO ONE YEAR**



Passenger Emergency Alarm

Window Units

Three types of windows have been used in LHB coaches:

- **Fixed window - 12 Nos.**
- **Emergency open-able window- 4 Nos.**
- **Hopper type window for lavatory - 3 per coach**

Emergency open able window

- It is similar to the fixed unit
- Four units are provided each coach to allow emergency evacuation of passengers
- A handle connected to the rubber profile opens the glass unit of the emergency window



EMERGENCY WINDOW



Handle

EMERGENCY OPEN ABLE WINDOW

HOPPER WINDOW FOR LAVATORY



Water tanks

3 types of water tanks are provided in LHB coach:

685 liters : 2 stainless steel water tanks of 685 liters capacity each. These tanks are installed in under frame in twos, are fixed with frames and are secured by safety belts. These tanks constitute the fresh water reserves in the passenger coaches. Water level indicator have been provided in these tanks.

450 liters : One stainless steel water tanks of 450 liters capacity. These tanks are installed in under frame, fixed with frames and is secured by safety belts.

3-stainless steel water tanks of 30 liters capacity installed one in each lavatory in the roof and are continuously fresh-water-fed by means of pumps. They maintain the good running of water supply of the barometrical capacitor at each station. These tanks are installed alone and are fixed with 2 supports which are equipped with belts.

FIXING DETAILS WITH USE OF RUBBER PACKING



DECALS

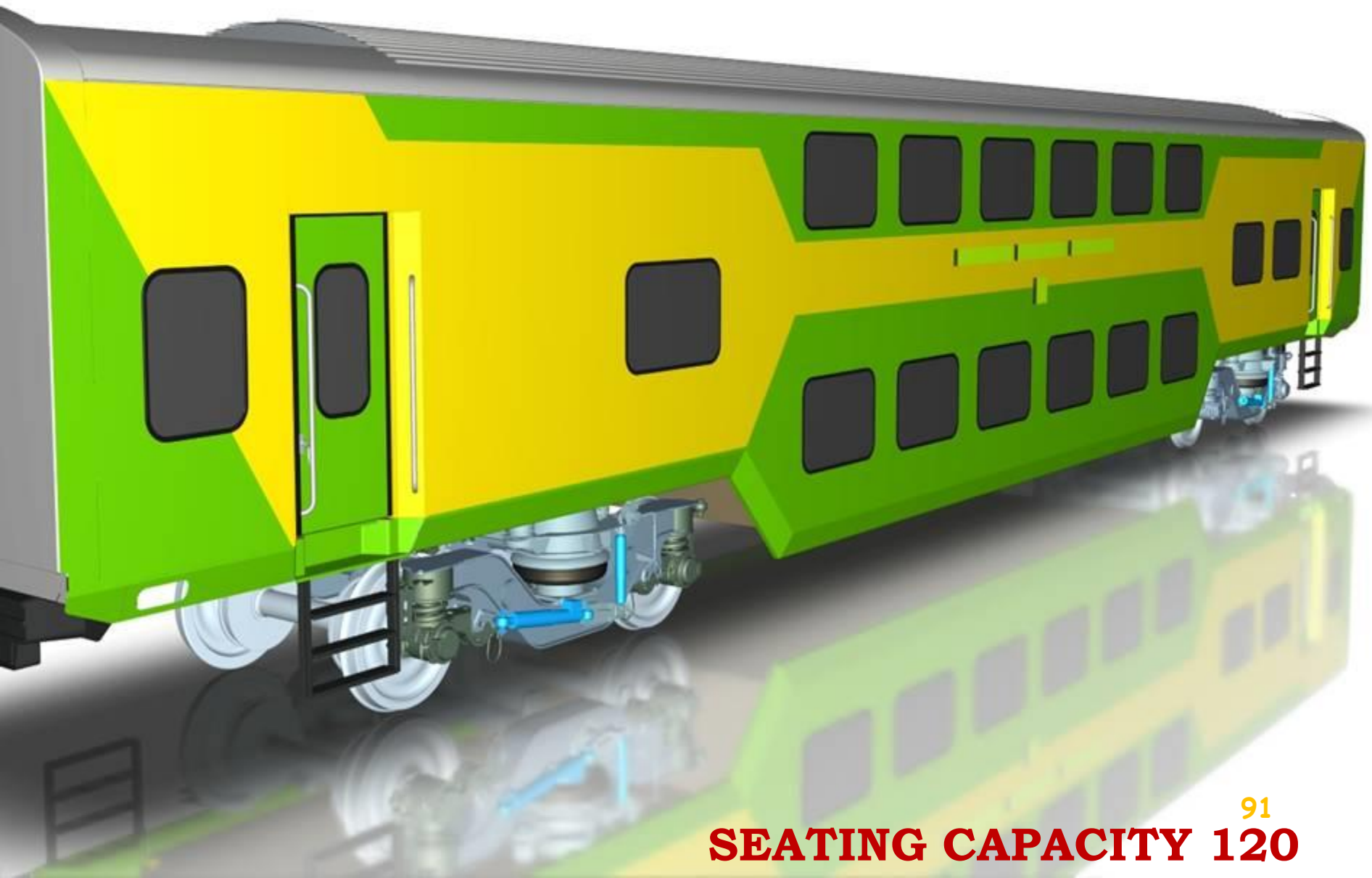
- **APPROXIMATELY 50 DIFFERENT TYPES OF STICKERS HAVE BEEN USED IN LHB COACHES.**

DECALS STICKERS



AC 2 TIER





SEATING CAPACITY 120

SHELL INSIDE

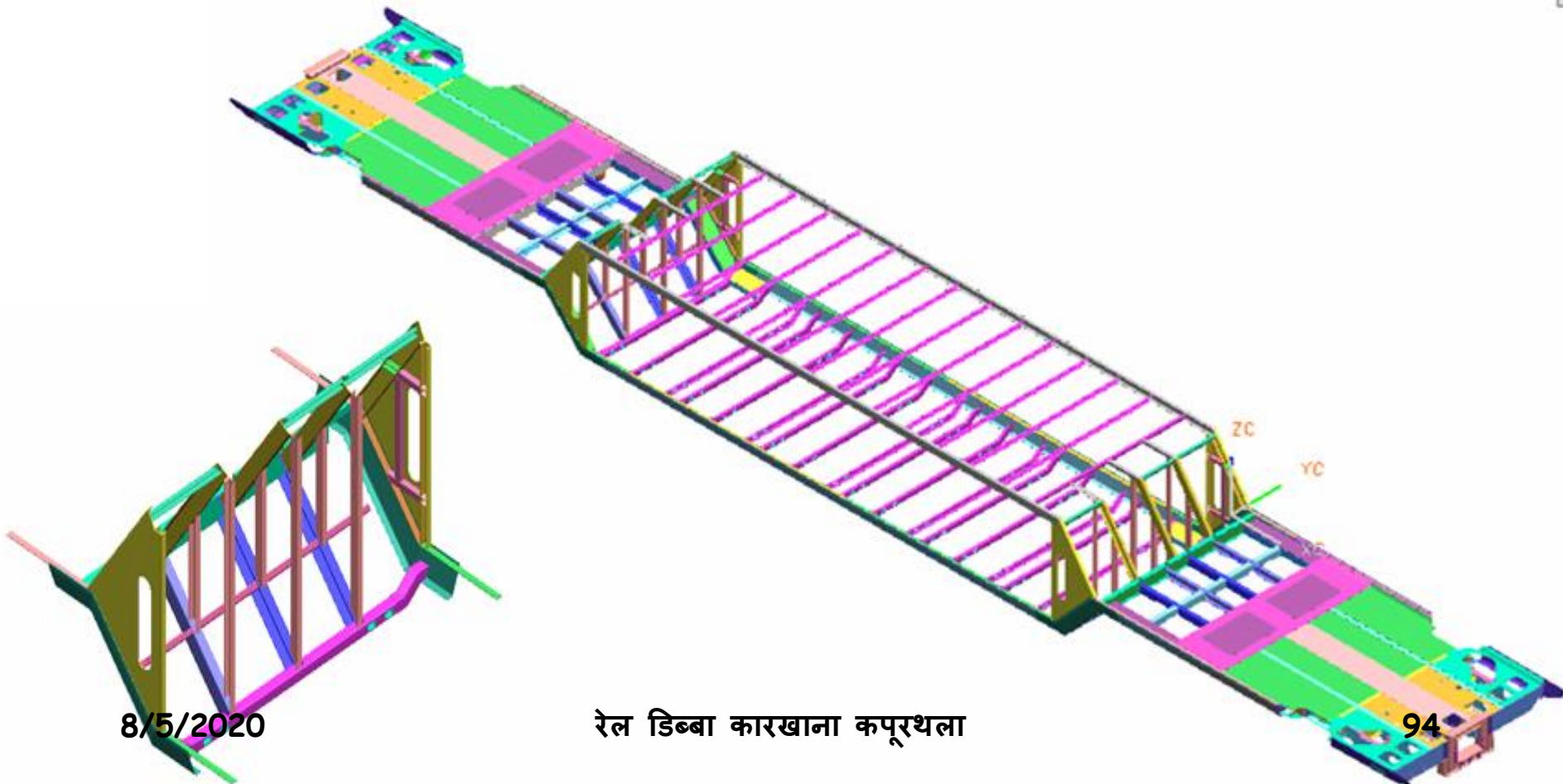


SHELL READY



UNDER FRAME DESIGN

- Beyond front part diamond joint is connected with Upper deck & Lower deck underframe



8/5/2020

रेल डिब्बा कारखाना कपूरथला

94

SS AC DOUBLE DECKER (EOG)



8/5/2020

रेल डिब्बा कारखाना कपूरथला

95

FIAT BOGIE WITH AIR SPRINGS





Thank You